

SEVERTSON

Land & Cattle

11th Annual Bull Sale

Monday, March 8, 2004 - 12 noon



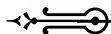
Sale will be held on the FARM

Innisfail, AB

Severtson • Chickadee Farm • Dusty & Ryan Porran

SEVERTSON *Land & Cattle* 11th Annual Bull Sale

*Monday, March 8, 2004 • 12 noon
at the FARM.....Innisfail, Alberta*



Selling 107 Bulls

- 31 Gelbvieh & Balancer Yearling Bulls
- 15 Long Yearling Gelbvieh & Balancer Bulls
- 13 Black Angus Yearling Bulls
- 6 Two Year Old Black Angus Bulls
- 35 Red Angus Yearling Bulls
- 7 Two Year Old Red Angus Bulls

Bulls available for inspection prior to the sale at Severtson Land & Cattle

Come for lunch prior to the sale
"Beef on a Bun" served at 11 am.

- Bulls will be semen tested, veterinary inspected and measured.
- Delivery is available at a cost of \$50 per bull from British Columbia to Manitoba. Beyond these points will be at cost. Just let us know when and where we are to deliver your bulls.
- Severtson Land & Cattle will develop your bull. We will keep the bulls after the sale and feed them a high roughage ration at a cost of \$2.00 per day.
 - Insurance available sale day.

Sale Staff

Auctioneer - Steve Dorrان (403) 540-9498
Ringman - Mark Stock (403) 357-8104
Ringman - Craig Fleweling (403) 224-2111

Catalogue - Production & Design by Prime Cut Publishing

General Information

CONDITIONS & GUARANTEE: All entries sell with a responsible breeders guarantee of satisfaction. In the unlikely event of any dispute whatever, regular TERMS & CONDITIONS recognized in accordance with Canadian Angus Association & Gelbvieh Association Code of Ethics.

ALL CATTLE ARE SOLD subject to tests as required for export under Regulations of Health of Animals Branch, Dept. of Agriculture for Canada. Export Health Charts and other required documents shall be provided at no charge by the consignors.

TERMS OF PAYMENT: Cash or cheque payable to Clerk of the Sale on sale day. U.S. funds will be accepted at the current rate of exchange on sale day.

INSURANCE: Ownership risk to purchaser commences when Auctioneer's hammer falls. Full mortality insurance is available by an insurance representative present sale day.

HOLDING & SHIPMENTS: Approximately one week is required for export transfers and other documents to be processed. Export animals will be held at the sale location at no charge and under excellent care. Joint export shipping arrangements to obtain minimal shipping cost will be made by the consignors if instructions to that effect are provided to Clerk of the Sale at time of settlement.

TRUCKING: Truckers believed to be reliable will be available on request to transport purchases.

OWNERS: Reserve the right to withhold from export shipment animals for whom buyer or buyers agent have not made arrangements for payments in full, or other satisfactory arrangements, prior to time of export departure.

ALL PERSONS: Who attend the sale do so at their own risk and the owners and sale staff assume no liability, legal or otherwise for property loss or for any accidents that may occur.



LAND & CATTLE

**Scott & Lisa
Severtson**

RR 2, Innisfail, AB T4G 1T7

Ph: (403) 224-3756

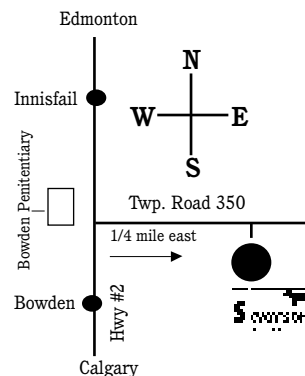
Cell: (403) 358-4676

www.severtsoncattle.com

scott@severtsoncattle.com

*The farm is located 1/4 mile east on Twp.
Road 350 off of Hwy #2. Across the
highway from the Bowden Penitentiary.*

See you March 8th at the
"New Sale Barn"
on the ranch!



Sale Day Phone: (403) 224-3756

Sale Headquarters - Highwayman Motor Inn
Innisfail, AB (403) 227-6001

Guest Consignors

CHICKADEE FARM

Jim & Laurel King & Family
RR 4, Innisfail, AB T4G 1T9

Ph: (403) 227-6081 • Cell: (403) 304-4717

DUSTY & RYAN DORRAN

Box 3262, Airdrie, AB T4B 2B5

Ph: (403) 226-2985

Welcome....

On behalf of everyone at Severtson Land & Cattle, I would like to welcome you to our 11th Annual Bull Sale.

It has been, to say the least, the most challenging year ever in the beef industry in Canada. Now, more than ever, it is important to use a quality bull.

One cannot afford to keep open cows or below average calves. The Gelbvieh breed is fast becoming the 'Continental Breed of Choice' and Angus has never had a more dominate place within the industry. The demand for Gelbvieh and Angus cross replacements has been tremendous.

Our goal has not changed, it remains to produce sound, functional breeding stock that will meet the needs of both commercial & seedstock producers. Once again, we are offering a set of fall born bulls and 2 year olds, older bulls will service more cows. They have been developed at home again this year, and grown out slowly on a grass and very high forage ration. We feel this is on target to ensure that you will have sound useful bulls now and in the future.

Once again the sale will be held at the ranch. We are pleased to be working with Chickadee Farms and Dusty & Ryan Dorran. There will be EPDs, performance data and scrotal measurements on the bulls available on sale day. All bulls will be semen tested and veterinary inspected.

Please join us for lunch prior to the sale, we look forward to seeing you on sale day.



Scott, Lisa, Levi, Amy & Molly Severtson



*Bud & Julie Gustafson
Herdsman*

Scott & Lisa Severtson





SEVERTSON *Galvich/Balancer Bulls*



SLC Freedom 178F is a top son of Leachman New Day. Freedom was the high seller at the 1997 Severtson Bull Sale.

This dark red bull is very structurally correct with a lot of muscle. He was one of our highest gaining bulls at 4.73 lbs. per day.

His dam is the fabulous BB Miss 61Y who sold for \$32,000 in the '98 Fall Female Sale. Freedom was crowned the Denver National Champion Bull in 1999. He is also homozygous polled and is siring calves that are thick made and easy fleshing with very moderate birth weights.

SLC Freedom 178F

Sire of Lots 1 - 4

SLC Merv 12N
along side his dam,
SLC Lora 192L, were
awarded the
Grand Champion Female
honors at the
2003 Canadian
Western Agribition.



Merv 12N

LOT
1

Red Polled Purebred Gelbvieh Bull

SLC Merv 12N

1/19/2003 SLC/12N PD97472

VAA LEACHMAN NEW DAY 205B	GLT SENSATION'S DAY 21Y	BW	84
SLC FREEDOM 178F ET	VAA 023Z	Adj.	764
BB MISS 61Y	BB MR FORKAS 1S (JSE M2)	WW	1295
	BB BELL ORCHID 2U	Adj.	4.10
SLC POLLED STUBBY 224H	XZR C342 (STUBBY)	ADG	1335
SLC LORA 192L	SLC MEL'S MISS ACES 9E	Pro	
AR LORA C 25H	SLC EMPIRE 41E	Sale	
	AR ANCHORS LADY 19E	WT	

EPDs	CE	BW	WW	YW	Milk	TM	Gest	DCE	SC
	104	0.8	38	71	18	37	-3.9	104	0.2
Acc.	I	I	I	I	I		I	I	I



SLC Lora 192L & Merv 12N
NATIONAL CHAMPION!!



SEVERTSON

Albvieh/Balancer Bulls

LOT
2

Red Polled Balancer Gelbvieh Bull
SLC Freedom 59N

2/1/2003 SLC/59N PR99150

VAA LEACHMAN NEW DAY 205B	GLT SENSATION'S DAY 21Y	BW	84
SLC FREEDOM 178F ET	VAA 023Z	Adj. WW	679
BB MISS 61Y	BB MR FORKAS 1S (JSE M2)	Adj. YW	1251
	BB BELL ORCHID 2U	ADG	3.18
XZR C342 (STUBBY)	KCF BENNETT HORIZON 103X	Pro Sale WT	1215
SLC JENNIFER 239J	ZXR 113A		
279 - BLACK ANGUS			

EPDs	CE	BW	WW	YW	Milk	TM	Gest	DCE	SC
Acc.	100	1.3	34	58	15	32	-1.5	99	0.3
	I	I	I	I	I	I	I	I	I



SLC Freedom 59N

LOT
3

Black Balancer Gelbvieh Bull
SLC Freedom 35N

1/26/2003 SLC/34N PD99108

VAA LEACHMAN NEW DAY 205B	GLT SENSATION'S DAY 21Y	BW	86
SLC FREEDOM 178F ET	VAA 023Z	Adj. WW	711
BB MISS 61Y	BB MR FORKAS 1S (JSE M2)	Adj. YW	1144
	BB BELL ORCHID 2U	ADG	3.22
XZR C342 (STUBBY)	KCF BENNETT HORIZON 103X	Pro Sale WT	1195
SLC 187J	ZXR 113A		
BLACK ANGUS			

EPDs	CE	BW	WW	YW	Milk	TM	Gest	DCE	SC
Acc.									

LOT
4

Red Polled 75% Gelbvieh Bull
SLC Freedom 52N

1/30/2003 SLC/52N PR99163

VAA LEACHMAN NEW DAY 205B	GLT SENSATION'S DAY 21Y	BW	78
SLC FREEDOM 178F ET	VAA 023Z	Adj. WW	642
BB MISS 61Y	BB MR FORKAS 1S (JSE M2)	Adj. YW	1304
	BB BELL ORCHID 2U	ADG	3.19
VAA LEACHMAN NEW DAY 205B	GLT SENSATION'S DAY 21Y	Pro Sale WT	1135
SLC KELSEY 209K	VAA 023Z		
555 - RED ANGUS			

EPDs	CE	BW	WW	YW	Milk	TM	Gest	DCE	SC
Acc.	106	-1.2	25	61	17	30	-4.5	102	NA
	I	I	I	I+	I	I	I	I	NA



SLC Latigo 118L

Sire of Lots 5 - 12



SLC Master Plan 134N

LOT
5

Black Polled Purebred Gelbvieh Bull
SLC Master Plan 134N

2/13/2003 SLC/134N PD97470

RTC ATLAS 712G	TLR COCOA 35C	BW	98
SLC LATIGO 118L	RTC 414D	Adj. WW	749
DJD VALLEY POLLED CLOUD 60X	CKS HOCKEY 82N	Adj. YW	1343
	DJD VALLEY 38K	ADG	4.42
SLC FREEDOM 178F ET	VAA LEACHMAN NEW DAY 205B	Pro Sale WT	1395
SLC DESIGN 64H	BB MISS 61Y		
SLC COPPER DESIGN 135F	XZR XZ COPPER 301C		
	KKC DINERO'S DESIGN 29B		

EPDs	CE	BW	WW	YW	Milk	TM	Gest	DCE	SC
Acc.	105	1.1	45	80	17	40	-1.8	102	0.2
	I	I	I	I	I	I	I	I	I

SLC Latigo was Reserve National Champion Bull in 2001. He is the thickest Atlas son that we have ever produced. He sports a very impressive set of EPDs. Latigo sold to Rod Tegmier in Nebraska at the 2002 Denver Stock show and his first set of calves were the heaviest sire group at weaning time this fall

SEVERTSON

Albvieh/Balancer Bulls

LOT 12

Red Polled Balancer Gelbvieh Bull

SLC Latigo 66N

2/ 1/2003 SLC/66N PR99174



SLC Latigo 66N

RTC ATLAS 712G	TLR COCOA 35C	BW	94
SLC LATIGO 118L	RTC 414D	Adj.	785
DJD VALLEY POLLED CLOUD 60X	CKS HOCKEYE 82N	WW	1254
	DJD VALLEY 38K	Adj.	1254
		YW	3.09
DGA MVF BRADY 45X	RVA BELCROFT 001N	ADG	1302
SLC BRADY'S GAL 41A	DGA MVF LADY 52L	Pro	
BLACK ANGUS		Sale	
		WT	

EPDs	CE	BW	WW	YW	Milk	TM	Gest	DCE	SC
	103	2.2	47	68	13	37	-0.3	103	NA
Acc.	I	I	I	I+	I		I	I	NA



NGAC Remitall Pld Excel 232E

Sire of Lots 13 - 17

He was purchased at the Remitall Dispersal Sale where he was the high selling lot at \$12,600. Excel was a two time National Champion Bull who is homozygous polled and one of the easiest fleshing, thickest made Gelbvieh bulls of all time.

LOT 13

Red Polled Purebred Gelbvieh Bull

SLC Excel 5N

1/ 5/2003 SLC/5N PD99132

LOT 14

Red Polled 88% Gelbvieh Bull

SLC Excel 1N

1/ 2/2003 SLC/1N PR99107

VAA LEACHMAN NEW DAY 205B	GLT SENSATION'S DAY 21Y	BW	90
NGAC REMITALL PLD EXCEL 232E	VAA 023Z	Adj.	709
BJL CHAUTAUQUA GIRL 927Y	ATC GOLD STAR 44U	WW	1197
	BJL MS CHAUTAUQUA 227P	Adj.	1197
		YW	3.12
XZR C342 (STUBBY)	KCF BENNETT HORIZON 103X	ADG	1245
SLC MISS EXPRESS 152J	XZR 113A	Pro	
LNR MISS EXPRESS 442Z ET	KCF POLLED EXPRESS 141R	Sale	
	LNR MISS SELECT 079U	WT	

EPDs	CE	BW	WW	YW	Milk	TM	Gest	DCE	SC
	100	1.9	38	65	17	36	-1.4	100	0.3
Acc.	I	I	I	I+	I		I	I	I

VAA LEACHMAN NEW DAY 205B	GLT SENSATION'S DAY 21Y	BW	94
NGAC REMITALL PLD EXCEL 232E	VAA 023Z	Adj.	780
BJL CHAUTAUQUA GIRL 927Y	ATC GOLD STAR 44U	WW	1117
	BJL MS CHAUTAUQUA 227P	Adj.	1117
		YW	3.20
XZR C342 (STUBBY)	KCF BENNETT HORIZON 103X	ADG	1277
SLC 38E	XZR 113A	Pro	
SLC HERDBUILDER 102C	OAR MO-ROC-GELB 92Y	Sale	
	RED ANGUS	WT	

EPDs	CE	BW	WW	YW	Milk	TM	Gest	DCE	SC
	100	1.3	34	58	15	32	-1.5	99	0.3
Acc.	I	I	I	I	I		I	I	I

SEVERTSON

Albvieh/Balancer Bulls



SLC Excel 4N

LOT 15

Red Polled 50% Gelbvieh Bull

SLC Excel 4N

1/ 4/2003 SLC/4N PR99176

VAA LEACHMAN NEW DAY 205B	GLT SENSATION'S DAY 21Y	BW	86
NGAC REMITALL PLD EXCEL 232E	VAA 023Z	Adj. WW	689
BJL CHAUTAUQUA GIRL 927Y	ATC GOLD STAR 44U	Adj. YW	1232
	BJL MS CHAUTAUQUA 227P	ADG	3.04
		Pro Sale WT	1235

66Z - RED ANGUS

EPDs	CE	BW	WW	YW	Milk	TM	Gest	DCE	SC
	103	-0.7	26	50	10	23	-1.6	98	NA
Acc.	I	I	I	I	I		I	I	NA



SLC Head Start 437M

LOT 16

Red Polled Purebred Gelbvieh Bull

SLC Head Start 437M

12/14/2002 SLC/437M PD97471

VAA LEACHMAN NEW DAY 205B	GLT SENSATION'S DAY 21Y	BW	89
NGAC REMITALL PLD EXCEL 232E	VAA 023Z	Adj. WW	722
BJL CHAUTAUQUA GIRL 927Y	ATC GOLD STAR 44U	Adj. YW	1270
	BJL MS CHAUTAUQUA 227P	ADG	3.42
BTI CHOTEAU 2135C	IRF POLL CHEYENNE 902Y	Pro Sale WT	1345
SFL SLC CHOTEAU SUE 95H	FLK 101 LILLA 912Y		
SFL SUE 120B	PCCI MR CENTENNIAL 083Z		
	SFL SCOTSWOOD SUE 8Y		

EPDs	CE	BW	WW	YW	Milk	TM	Gest	DCE	SC
	95	4.4	41	68	16	37	-1.3	99	0.3
Acc.	I	I	I	I	I		I	I	I

LOT 17

Red Polled Balancer Gelbvieh Bull

SLC Excel 445M

12/26/2002 SLC/445M PR99142

VAA LEACHMAN NEW DAY 205B	GLT SENSATION'S DAY 21Y	BW	92
NGAC REMITALL PLD EXCEL 232E	VAA 023Z	Adj. WW	658
BJL CHAUTAUQUA GIRL 927Y	ATC GOLD STAR 44U	Adj. YW	1251
	BJL MS CHAUTAUQUA 227P	ADG	3.48
XZR C342 (STUBBY)	KCF BENNETT HORIZON 103X	Pro Sale WT	1392
SLC JEWEL 188J	XZR 113A		
19X - BLACK ANGUS			

EPDs	CE	BW	WW	YW	Milk	TM	Gest	DCE	SC
	103	0.9	29	55	13	28	-1.9	102	NA
Acc.	I	I	I	I	I		I	I	NA



XZR C342 "Stubby"

Sire of Lots 18 - 25

XZR C342 (Stubby) has done a phenomenal job at Severtson Land & Cattle. His sons and daughters have also done extremely well, especially in the breeding pasture.

He is a real calving ease sire, in fact, as good as any used by Scott. XZR C342 continually sires calves that are below average at birth and above average at weaning time. His calves are very thickly made and deep ribbed.

SEVERTSON

Albvieh/Balancer Bulls

LOT
18

Black Polled 50% Gelbvieh Bull
SLC Stubby 255M

8/10/2002 SLC/255M PR99170

KCF BENNETT HORIZON 103X ZXR C342 (STUBBY) ZXR 113A	NHP POLLED FEATURE KCF MISS P2356 T40 ZXR 966Y ZXR 467T	BW Adj. WW Adj. YW ADG Pro Sale WT	86 709 975 3.25 1362
962 - BLACK ANGUS			

EPDs	CE	BW	WW	YW	Milk	TM	Gest	DCE	SC
Acc.	105	-0.5	34	65	15	32	-1.2	107	NA
	I	I	I	I+	I	I	I	I	NA

LOT
19

Red Polled Purebred Gelbvieh Bull
SLC Stubby 428M

12/14/2002 SLC/428M PD99117

KCF BENNETT HORIZON 103X ZXR C342 (STUBBY) ZXR 113A	NHP POLLED FEATURE KCF MISS P2356 T40 ZXR 966Y ZXR 467T	BW Adj. WW Adj. YW ADG Pro Sale WT	88 660 1163 4.14 1490
HHF POLLED SUMMIT 648U SLC MISS FELISHA 107H ET SLC FELISHA 51B	BMB STATESMAN P214 CPG MISS FLOTO PRIDE 187R PCCI MR CENTENNIAL 083Z SLC MISS ACES 114Z		

EPDs	CE	BW	WW	YW	Milk	TM	Gest	DCE	SC
Acc.	108	1.0	38	68	21	40	-0.8	111	0.4
	I	I	I	I	I	I	I	I	I

LOT
20

Black Polled 50% Gelbvieh Bull
SLC Stubby 257M

8/12/2002 SLC/257M PR99168

KCF BENNETT HORIZON 103X ZXR C342 (STUBBY) ZXR 113A	NHP POLLED FEATURE KCF MISS P2356 T40 ZXR 966Y ZXR 467T	BW Adj. WW Adj. YW ADG Pro Sale WT	84 670 964 3.21 1445
SLC 46H - BLACK ANGUS			

EPDs	CE	BW	WW	YW	Milk	TM	Gest	DCE	SC
Acc.	105	-0.8	31	64	15	31	-1.2	107	NA
	I	I	I	I+	I	I	I	I	NA

LOT
21

Black Polled 50% Gelbvieh Bull
SLC Stubby 260M

8/14/2002 SLC/260M PR99169

KCF BENNETT HORIZON 103X ZXR C342 (STUBBY) ZXR 113A	NHP POLLED FEATURE KCF MISS P2356 T40 ZXR 966Y ZXR 467T	BW Adj. WW Adj. YW ADG Pro Sale WT	88 656 950 3.33 1335
SLC 158H - BLACK ANGUS			

EPDs	CE	BW	WW	YW	Milk	TM	Gest	DCE	SC
Acc.	105	-0.2	30	63	15	30	-1.2	107	NA
	I	I	I	I+	I	I	I	I	NA

LOT
22

Red Purebred Gelbvieh Bull
CDW Mega Stubby 200M

9/28/2002 CDW/200M D99022

KCF BENNETT HORIZON 103X ZXR C342 (STUBBY) ZXR 113A	NHP POLLED FEATURE KCF MISS P2356 T40 ZXR 966Y ZXR 467T	BW Adj. WW Adj. YW ADG Pro Sale WT	83 778 1145 3.42 1445
JBOB BLACK IMAGE 31Y CDW EMPRESS 200K YHR 54Y	DDM MR SHERMAN TANK BMB 230R BMW POLLED CLASSIC 82T CTR FREIT STAR 439S		

EPDs	CE	BW	WW	YW	Milk	TM	Gest	DCE	SC
Acc.	102	2.1	38	66	21	40	-2.1	106	0.3
	I	I	I	I	I	I	I	I	I

LOT
23

Red Polled Purebred Gelbvieh Bull
SLC Stubby 439M

12/16/2002 SLC/439M PD99148

KCF BENNETT HORIZON 103X ZXR C342 (STUBBY) ZXR 113A	NHP POLLED FEATURE KCF MISS P2356 T40 ZXR 966Y ZXR 467T	BW Adj. WW Adj. YW ADG Pro Sale WT	84 640 1257 3.40 1385
ZXR C342 (STUBBY) SLC JAMIE LEE 231J SLC 38E	KCF BENNETT HORIZON 103X ZXR 113A ZXR C342 (STUBBY) SLC HERDBUILDER 102C		

EPDs	CE	BW	WW	YW	Milk	TM	Gest	DCE	SC
Acc.	104	1.1	39	67	19	39	-1.5	110	0.4
	I	I	I	I	I	I	I	I	I

LOT
24

Red Polled Purebred Gelbvieh Bull
SLC Stubby 441M

12/18/2002 SLC/441M PD99149

KCF BENNETT HORIZON 103X ZXR C342 (STUBBY) ZXR 113A	NHP POLLED FEATURE KCF MISS P2356 T40 ZXR 966Y ZXR 467T	BW Adj. WW Adj. YW ADG Pro Sale WT	82 648 1236 3.36 1295
ZXR C342 (STUBBY) SLC FRANCIS 235J DGA MVF FRANCIS 81X	KCF BENNETT HORIZON 103X ZXR 113A CRB FALLGUY U3 DGA MVF BEATRICE 59U		

EPDs	CE	BW	WW	YW	Milk	TM	Gest	DCE	SC
Acc.	101	1.9	45	74	17	40	-1.2	108	0.4
	I	I	I	I	I	I	I	I	I

LOT
25

Red Polled Purebred Gelbvieh Bull
SLC Stubby 444M

12/20/2002 SLC/444M PD99160

KCF BENNETT HORIZON 103X ZXR C342 (STUBBY) ZXR 113A	NHP POLLED FEATURE KCF MISS P2356 T40 ZXR 966Y ZXR 467T	BW Adj. WW Adj. YW ADG Pro Sale WT	88 650 1243 3.41 1328
DTJ HEAVY FIRE POWER ET 41H SLC MISS ACES 151K SLC MISS ACES 56G	NGAC REMITALL FIRE POWER 101F BB MISS 61Y BTI CHOTEAU 2135C SLC MISS ACES 114Z		

EPDs	CE	BW	WW	YW	Milk	TM	Gest	DCE	SC
Acc.	101	2.6	41	73	19	40	-1.0	108	0.3
	I	I	I	I	I	I	I	I	I

SEVERTSON

Albvieh/Balancer Bulls



"Rip" has seen heavy use at SLC the past two breeding seasons. His first calf crop just pushed down the scales weaning the heaviest of our sire groups. 121K is very thick made, sound footed and docile. He has a very interesting pedigree with SLC Fuller who is a 61Y x Polled Summit. This, combined with Gunsmoke, who is represented on the dam's side, traces back to the Angus breed legend QAS Traveler 23-4. Rip was National Champion Bull in 2002.

SLC Rip 121K

Sire of Lots 26 - 33



CDW SLC Rip 82M

LOT 26

Red Polled 88% Gelbvieh Bull

CDW SLC Rip 82M

2/9/2002 CDW/82M PR89733

SLC FULLER 84F ET	HHF POLLED SUMMIT 648U	BW	92
SLC RIP 121K	BB MISS 61Y	Adj. WW	687
SLC MISS FIRE SMOKE 78F	JWR GUNSMOKE 32Z	Adj. YW	1191
	GKR 117C	ADG	3.02
VAA LEACHMAN NEW DAY 205B	GLT SENSATION'S DAY 21Y	Pro Sale WT	1965
SLC NEW PARKLAND 27F	VAA 023Z		
SLC PARKLAND 202D	XZR 165A		
	RED ANGUS		

EPDs	CE	BW	WW	YW	Milk	TM	Gest	DCE	SC
Acc.	.08	.33	.24	.10	.09	36	-1.6	105	0.3

LOT 27

Red Polled Balancer Gelbvieh Bull

CDW SLC Rip 157M

2/28/2002 CDW/157M PR89771

SLC FULLER 84F ET	HHF POLLED SUMMIT 648U	BW	92
SLC RIP 121K	BB MISS 61Y	Adj. WW	668
SLC MISS FIRE SMOKE 78F	JWR GUNSMOKE 32Z	Adj. YW	1180
	GKR 117C	ADG	3.36
XZR C342 (STUBBY)	KCF BENNETT HORIZON 103X	Pro Sale WT	1755
CDW MISS AMY 270H	XZR 113A		
59 - BLACK ANGUS			

EPDs	CE	BW	WW	YW	Milk	TM	Gest	DCE	SC
Acc.	100	2.0	35	62	18	36	-0.8	105	0.4
	.05	.32	.22	.07	.07	.10	.06	.06	.04

LOT 28

Red Polled Purebred Gelbvieh Bull

SFL SLC Rip 216N

3/10/2003 SFL/216N PD99196

SLC FULLER 84F ET	HHF POLLED SUMMIT 648U	BW	90
SLC RIP 121K	BB MISS 61Y	Adj. WW	633
SLC MISS FIRE SMOKE 78F	JWR GUNSMOKE 32Z	Adj. YW	1165
	GKR 117C	ADG	3.11
PCCI MR CENTENNIAL 083Z	KKC CENTENIAL 73X	Pro Sale WT	1135
SFL SUE 120B	PCCI 95U		
SFL SCOTSWOOD SUE 8Y	SRE CHARLIE BROWN 54W		
	SFL SCOTSWOOD SUE 15T		

EPDs	CE	BW	WW	YW	Milk	TM	Gest	DCE	SC
Acc.	97	4.1	38	59	19	38	-0.4	103	0.2
	I	I	I	I+	I	I	I	I	I

SEVERTSON

Albvieh/Balancer Bulls

LOT
29

Red Polled Balancer Gelbvieh Bull
SLC Rip 296N

4/1/2003 SLC/296N PR99110

SLC FULLER 84F ET	HHF POLLED SUMMIT 648U	BW	88
SLC RIP 121K	BB MISS 61Y	Adj.	685
SLC MISS FIRE SMOKE 78F	JWR GUNSMOKE 32Z	WW	1288
	GKR 117C	Adj.	1288
		YW	
BTI CHOTEAU 2135C	IRF POLL CHEYENNE 902Y	ADG	2.95
SLC 226E	FLK 101 LILLA 912Y	Pro	1045
11C - RED ANGUS		Sale	
		WT	

EPDs	CE	BW	WW	YW	Milk	TM	Gest	DCE	SC
	99	1.7	41	73	19	40	-0.3	103	NA
Acc.	I	I	I	I+	I		I	I	NA

LOT
30

Red Polled Balancer Gelbvieh Bull
SLC Rip 226M

4/3/2002 SLC/226M PR90502

SLC FULLER 84F ET	HHF POLLED SUMMIT 648U	BW	88
SLC RIP 121K	BB MISS 61Y	Adj.	811
SLC MISS FIRE SMOKE 78F	JWR GUNSMOKE 32Z	WW	1240
	GKR 117C	Adj.	1240
		YW	
BTI CHOTEAU 2135C	IRF POLL CHEYENNE 902Y	ADG	3.14
SLC CHOTEAU'S ERIN 175E	FLK 101 LILLA 912Y	Pro	1695
71Y - RED ANGUS		Sale	
		WT	

EPDs	CE	BW	WW	YW	Milk	TM	Gest	DCE	SC
	96	3.5	50	79	14	39	-0.3	102	0.4
Acc.	.04	.31	.23	.06	.07		.09	.04	.04

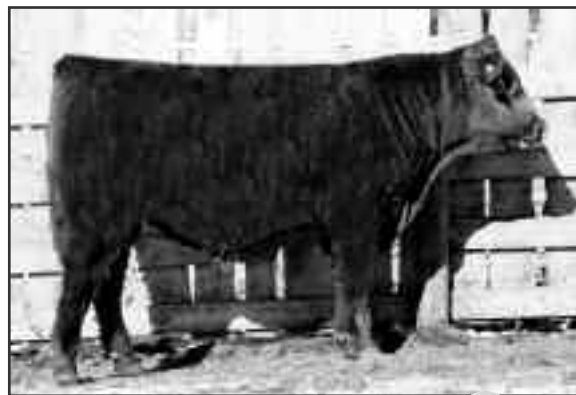
LOT
31

Red 50% Gelbvieh Bull
CDW Heavy FP Nitro 256N

2/17/2003 CDW/256N R99018

NGAC REMITALL FIRE POWER 101F	JWR GUNSMOKE 32Z	BW	90
DTJ HEAVY FIRE POWER ET 41H	MKR MISS G D HEROS 85X	Adj.	706
BB MISS 61Y	BB MR FORKAS 1S (JSE M2)	WW	1245
	BB BELL ORCHID 2U	Adj.	1245
		YW	
		ADG	3.39
CDW 256 - RED ANGUS		Pro	1295
		Sale	
		WT	

EPDs	CE	BW	WW	YW	Milk	TM	Gest	DCE	SC
	100	1.7	34	74	15	32	-0.3	103	NA
Acc.	I	I	I	I	I		I	I	NA



CDW Heavy FP Nitro 256N

LOT
32

Red Polled Balancer Gelbvieh Bull
SLC Heavy Fire Power 155N

2/19/2003 SLC/155N PR99104

NGAC REMITALL FIRE POWER 101F	JWR GUNSMOKE 32Z	BW	102
DTJ HEAVY FIRE POWER ET 41H	MKR MISS G D HEROS 85X	Adj.	743
BB MISS 61Y	BB MR FORKAS 1S (JSE M2)	WW	1264
	BB BELL ORCHID 2U	Adj.	1264
		YW	
MMM CALBERTA BLITZ 214B	HHF POLLED SUMMIT 648U	ADG	3.14
SLC DYNAMIC 144D	KHR 919Y	Pro	1169
RED ANGUS		Sale	
		WT	

EPDs	CE	BW	WW	YW	Milk	TM	Gest	DCE	SC
	100	2.7	37	65	17	36	-0.3	105	NA
Acc.	I	I	I	I+	I		I	I	NA

LOT
33

Red Polled 75% Gelbvieh Bull
SLC Heavy Fire Power 191N

3/3/2003 SLC/191N PR99095

NGAC REMITALL FIRE POWER 101F	JWR GUNSMOKE 32Z	BW	92
DTJ HEAVY FIRE POWER ET 41H	MKR MISS G D HEROS 85X	Adj.	746
BB MISS 61Y	BB MR FORKAS 1S (JSE M2)	WW	1238
	BB BELL ORCHID 2U	Adj.	1238
		YW	
DGA MVF BRADY 45X	RVA BELCROFT 001N	ADG	3.32
SLC FANCY 8A	DGA MVF LADY 52L	Pro	1276
RED ANGUS		Sale	
		WT	

EPDs	CE	BW	WW	YW	Milk	TM	Gest	DCE	SC
	101	3.3	35	59	16	34	-0.1	105	NA
Acc.	I	I	I	I	I		I	I	NA

LOT
34

Black Polled Balancer Gelbvieh Bull
SLC Rated-R 180N

2/26/2003 SLC/180N PR99134

SLC EMPIRE 41E	KCF BENNETT PREMIER Z104	BW	82
SLC RATED-R 80H	YHR 54Y	Adj.	677
SLG MISS BERGEN SLG 109A	LNR CAPSTONE 822Y	WW	1220
	AFG BERGEN WILLOW	Adj.	1220
		YW	
BLACK ANGUS		ADG	3.46
ATC GOLD STAR PLD BLK 212J	VSD GOLD DUST HERMAN	Pro	1223
ATC GOLD STAR 13E	ATC GOLD STAR 113C	Sale	
		WT	

EPDs	CE	BW	WW	YW	Milk	TM	Gest	DCE	SC
	106	-0.3	31	51	16	32	-0.5	103	NA
Acc.	I	I	I	I+	I		I	I	NA



SLC Rated - R 80H
Sire of Lot 34

SEVERTSON

Albvieh/Balancer Bulls

LOT
35

Red Polled Purebred Gelbvieh Bull
SLC Icon 155M

2/28/2002 SLC/155M PD89769

HHF W21 POLLED PATRIOT	ATM TEJAS ROLLS ROYCH 868	BW	98
JCGR BAR GT ICON 1115F	HHF RED GIRL T23 ET	Adj. WW	718
JCGR 518B ET	FLK 101 RAMBEAU 1X	Adj. YW	1203
	DGA MVF RED ROSE 46Y	ADG	3.46
JWR GUNSMOKE 32Z	EGF MR 709R (DOC)	Pro Sale	1710
SLC MISS FIRE SMOKE 78F	CKS MS MINN BEL N108	WT	
GKR 117C	MCJ BLACK HUSKER		
	GKR 817A		

EPDs	CE	BW	WW	YW	Milk	TM	Gest	DCE	SC
	99	3.6	43	74	20	42	0.4	104	0.2
Acc.	.12	.34	.27	.16	.12		.32	.12	.15



SLC Icon 155M

LOT
36

Red Polled Purebred Gelbvieh Bull
SLC Edge 112N

2/9/2003 SLC/112N PD99135

KRT LAZY TV POLLED EDGE	HHF POLLED SUMMIT 648U	BW	100
SLC CARREL'S EDGE 72H	KRT MISS EDGE 644U	Adj. WW	674
SLC ANITA ET 263F	VAA LEACHMAN NEW DAY 205B	Adj. YW	1219
	BB MISS 61Y	ADG	2.95
AR MACKENZIE 7G	FLGY 1110A	Pro Sale	1085
JES JEAN 136J	AR GRIMSHAW GIRL 20E	WT	
JC PEMBINA DAWN 29D	KFW POLLED PIRATE 322A		
	JC MISS PEMBINA 99Z		

EPDs	CE	BW	WW	YW	Milk	TM	Gest	DCE	SC
	96	4.7	36	56	28	46	-0.3	100	0.4
Acc.	I	I	I	I+	I		I	I	I

LOT
37

Red Polled Purebred Gelbvieh Bull
SLC Patriot 147N ET

2/17/2003 SLC/147N PD99188ET

ATM TEJAS ROLLS ROYCH 868	FLOTO	BW	86
HHF W21 POLLED PATRIOT	FDA MISS ARATA 868K	Adj. WW	637
HHF RED GIRL T23 ET	LNR MAGNUM (0715094)	Adj. YW	1306
	MAC MISS VALHALLA 709P	ADG	3.32
OAR MO-ROC-GELB 92Y	ATC GOLD STAR WHISKEY 18R	Pro Sale	1134
SFL SLC MS CENTENNIAL 188C	OAR MO-ROC GELB R12 RUTH	WT	
SFL SCOTSWOOD SUE 12S	DCC DUNVEGAN FORST 64P		
	SFL SCOTSWOOD SUE 5N		

EPDs	CE	BW	WW	YW	Milk	TM	Gest	DCE	SC
	101	3.6	38	68	19	38	-0.1	98	0.1
Acc.	I	I	I	I	I		I	I	I

LOT
38

Black Polled Purebred Gelbvieh Bull
SLC Echo 172M ET

3/5/2002 SLC/172M PD90524ET

MCJ BLACK HUSKER	BEA POLLED MIDNIGHT 782W	BW	96
CTR ECHO 575E	OLY 30X	Adj. WW	681
CTR CEDAR TOP'S MISS POWER	AAA TOM HORN	Adj. YW	1232
	CTR STAR FLOPRIN 659U	ADG	3.11
PTE Z937	DDM MR SHERMAN TANK	Pro Sale	1545
BTI MS HELEN B 2081B	CCD 1133N GRAND RIVER	WT	
CKS MS HELEN N5	CGA HELAU 67254		
	CKS MS MM L36		

EPDs	CE	BW	WW	YW	Milk	TM	Gest	DCE	SC
	101	1.6	41	71	25	46	-2.8	107	0.5
Acc.	.01	.01	.01	.01	.01		.01	.01	I

LOT
39

Red Polled Purebred Gelbvieh Bull
SLC Louie 91N ET

2/7/2003 SLC/91N PD99187ET

GKT BUD 11G	GKT BOO BOO 155E	BW	82
JCGR BAR GT LOUIE 2J	GKT KATIE	Adj. WW	478
049C	PGRS SHINING SPIRIT	Adj. YW	1354
	041Z	ADG	3.04
SLC FREEDOM 178F ET	VAA LEACHMAN NEW DAY 205B	Pro Sale	1110
SLC FREE ELEGANCE 13H	BB MISS 61Y	WT	
SLC MISS ELEGANCE 46F	JWR GUNSMOKE 32Z		
	KKC MISS ELEGANCE 64Y		

EPDs	CE	BW	WW	YW	Milk	TM	Gest	DCE	SC
	103	1.5	40	74	21	41	-2.3	103	NA
Acc.	I	I	I	I	I		I	I	NA

LOT
40

Red Polled Balancer Gelbvieh Bull
JAB Napoleon 2N

3/28/2003 JAB/2N PR97131

GLT SENSATION'S DAY 21Y	LAR MR SENSATION 506S	BW	82
VAA LEACHMAN NEW DAY 205B	IHF MISS ING-HO 29S	Adj. WW	705
VAA 023Z	ATM TEJAS ROLLS ROYCH 868	Adj. YW	1215
	VAA 790W	ADG	3.21
XZR C342 (STUBBY)	KCF BENNETT HORIZON 103X	Pro Sale	1104
JAB MRS. B 1J	XZR 113A	WT	
RED ANGUS			

EPDs	CE	BW	WW	YW	Milk	TM	Gest	DCE	SC
	111	-3.1	26	55	18	31	-3.2	107	NA
Acc.	I	I	I	I	I		I	I	NA



JAB Napoleon 2N

SEVERTSON

Albvieh/Balancer Bulls

LOT
41

Red Polled Purebred Gelbvieh Bull
SLC Flashpoint 81N ET

2/4/2003 SLC/81N PD99182ET

WGG WINDY PERFECTO 112B WGG FLASHPOINT 91F ARO MS RED EDGE Z049P	ARO SENATORE 50Z CCD GRAND RIVER Z62 ELK RED EDGE 5R ARO MS BLACK EDGE P887X	BW 72 Adj. WW 593 Adj. YW 1218
SLC FREEDOM 178F ET SLC FREE ELEGANCE 13H SLC MISS ELEGANCE 46F	VAA LEACHMAN NEW DAY 205B BB MISS 61Y JWR GUNSMOKE 32Z KKC MISS ELEGANCE 64Y	ADG 3.02 Pro Sale 1045 WT

EPDs	CE	BW	WW	YW	Milk	TM	Gest	DCE	SC
	99	2.1	37	78	20	39	-2.4	102	0.2
Acc.	I	I	I	I	I	I	I	I	I

LOT
43

Black Polled Balancer Gelbvieh Bull
SLC Atlas 62N

2/1/2003 SLC/62N PR99128

TLR COCOA 35C RTC ATLAS 712G RTC 414D	BEA POLLED MIDNIGHT 782W TLR MISS KAISER 449Y KCF BENNETT PREMIER Z104 RTC NUGGETTE 124A	BW 82 Adj. WW 630 Adj. YW 1287
BLACK ANGUS ATC GOLD STAR PLD BLK 119J ATC GOLD STAR 97C	BCD MR LITTLE PINES 43Y ATC GOLD STAR 20X	ADG 3.22 Pro Sale 1186 WT

EPDs	CE	BW	WW	YW	Milk	TM	Gest	DCE	SC
	107	-2.0	30	59	14	29	-0.8	106	NA
Acc.	I	I	I	I	I	I	I	I	NA

LOT
45

Black 50% Gelbvieh Bull
CDW Ka-Boom 116N

2/15/2003 CDW/116N R99017

BLACK ANGUS PTC PRIME TIME'S KA-BOOM 767 BLACK ANGUS	SLC EMPIRE 41E SLG MISS BERGEN SLG 109A SLC EMPIRE 41E SLC BLACK LADY 25B	BW 102 Adj. WW 792 Adj. YW 1236
SLC RATED-R 80H CDW SLC LADY AMY 116L AR LADY AMY 17H		ADG 3.42 Pro Sale 1292 WT

EPDs	CE	BW	WW	YW	Milk	TM	Gest	DCE	SC
	103	0.8	31	61	16	32	-0.5	101	NA
Acc.	I	I	I	I	I	I	I	I	NA



RBLC Ray Ban 124L

LOT
42

Red Polled Purebred Gelbvieh Bull
SLC Flashpoint 120N ET

2/11/2003 SLC/120N PD99172ET

WGG WINDY PERFECTO 112B WGG FLASHPOINT 91F ARO MS RED EDGE Z049P	ARO SENATORE 50Z CCD GRAND RIVER Z62 ELK RED EDGE 5R ARO MS BLACK EDGE P887X	BW 80 Adj. WW 531 Adj. YW 1221
SLC FREEDOM 178F ET SLC FREE ELEGANCE 13H SLC MISS ELEGANCE 46F	VAA LEACHMAN NEW DAY 205B BB MISS 61Y JWR GUNSMOKE 32Z KKC MISS ELEGANCE 64Y	ADG 2.94 Pro Sale 1084 WT

EPDs	CE	BW	WW	YW	Milk	TM	Gest	DCE	SC
	99	2.1	37	78	20	39	-2.4	102	0.1
Acc.	I	I	I	I	I	I	I	I	I

LOT
44

Black 50% Gelbvieh Bull
CDW Ka-Boom 171N

3/16/2003 CDW/171N R99019

BLACK ANGUS PTC PRIME TIME'S KA-BOOM 767 BLACK ANGUS	KCF BENNETT HORIZON 103X XZR 113A XZR XZ COPPER 301C SLC HERDBUILDER 253D	BW 78 Adj. WW 698 Adj. YW 1182
XZR C342 (STUBBY) SLC MISS JENNY FAY 171J SLC MISS COPPER FAY 77G		ADG 3.04 Pro Sale 1048 WT

EPDs	CE	BW	WW	YW	Milk	TM	Gest	DCE	SC
	106	-1.1	31	62	15	31	-0.8	104	NA
Acc.	I	I	I	I	I	I	I	I	NA



CDW Ka-Boom 116N

LOT
46

Black Polled Purebred Gelbvieh Bull
RBLC Ray Ban 124L

4/5/2001 RBLC/124L PD85300

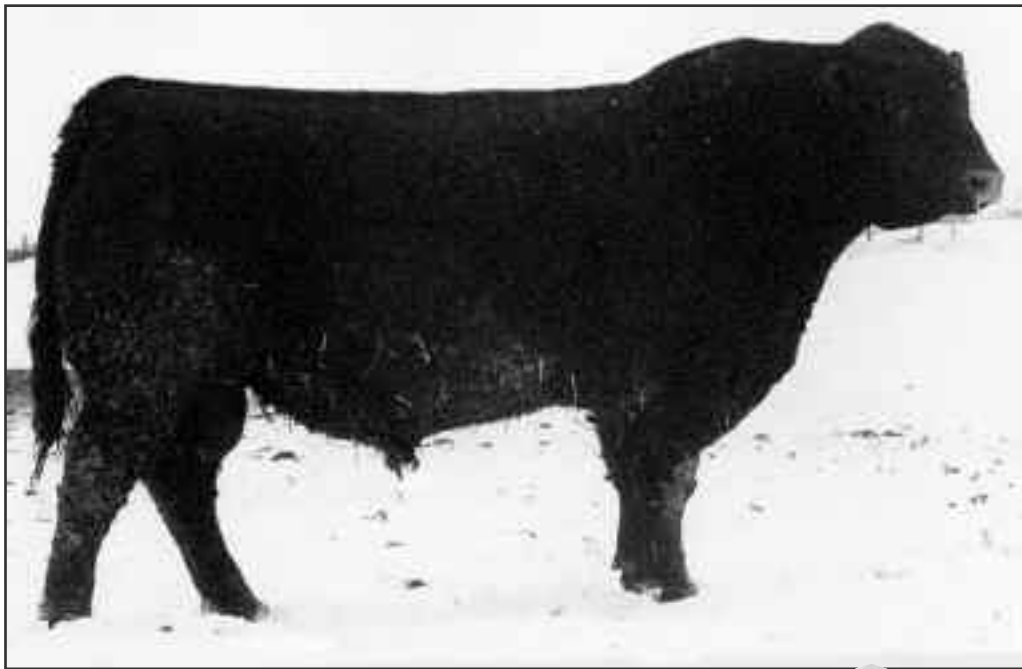
XZR C342 (STUBBY) SLC RAY-BAN 222H DJD VALLEY POLLED CLOUD 60X	KCF BENNETT HORIZON 103X XZR 113A CKS HOCKEYE 82N DJD VALLEY 38K	BW 88 Adj. WW 783 Adj. YW 1203
JBOB BLACK IMAGE 31Y SLC ANITA 124J ET BB MISS 61Y	DDM MR SHERMAN TANK BMB 230R BB MR FORKAS 1S (JSE M2) BB BELL ORCHID 2U	ADG 3.42 Pro Sale 2295 WT

EPDs	CE	BW	WW	YW	Milk	TM	Gest	DCE	SC
	105	1.6	40	72	17	37	-2.0	106	0.3
Acc.	I	I	I	I	I	I	I	I	I



SEVERTSON

Black Angus Bulls



Bighill Farms Traveler 72/00

Sire of Lots 47 - 51

LOT
47

SLC Travler 238N Black Angus Bull

3/14/2003 SCL/238N 1159933

ALBERDA TRAVELER 416	D H D TRAVELER 6807	BW	78
BIGHILL FARMS TRAVELER 72/00	ALBERDA QUEEN KIMBERLY 222	Act.	642
ASPELUND'S MARYLEE 19'95	HOFF GREAT WESTERN S C 456	WW	1110
	FCP MARYLEE 31X	Adj.	1110
		YW	
BT FREON 24F	BEARTOOTH ICE 82D	ADG	3.09
SLC BLACKBIRD 29H	ERISKAY OF ROLLIN ROCK 7222	Pro	
RED SLC BLACKBIRD 8B	RED BIEBER DSIGN 1325-082	Sale	1042
	RED BLUE SPRUCE BLACKBIRD 41Z	WT	

EPDs BW WW YW Milk TM

Acc.

LOT
48

SLC Travler 253N Black Angus Bull

3/16/2003 SCL/253N 1159945

ALBERDA TRAVELER 416	D H D TRAVELER 6807	BW	98
BIGHILL FARMS TRAVELER 72/00	ALBERDA QUEEN KIMBERLY 222	Act.	690
ASPELUND'S MARYLEE 19'95	HOFF GREAT WESTERN S C 456	WW	1195
	FCP MARYLEE 31X	Adj.	1195
		YW	
BT FREON 24F	BEARTOOTH ICE 82D	ADG	3.28
SLC PRALEE 77J	ERISKAY OF ROLLIN ROCK 7222	Pro	
RED TASSEL PRALEE 163W	RED TASSEL CHEROKEE 24S	Sale	1109
	RED LEACHMAN PRALEE 1578	WT	

EPDs BW WW YW Milk TM

Acc.

LOT
49

SLC Travler 256N Black Angus Bull

3/17/2003 SCL/256N 1159965

ALBERDA TRAVELER 416	D H D TRAVELER 6807	BW	84
BIGHILL FARMS TRAVELER 72/00	ALBERDA QUEEN KIMBERLY 222	Act.	604
ASPELUND'S MARYLEE 19'95	HOFF GREAT WESTERN S C 456	WW	1118
	FCP MARYLEE 31X	Adj.	1118
		YW	
RED YY STORM 901J	RED YY 408D TOP GUN 614F	ADG	3.22
SLC BLACKBIRD 128L	RED DEVOLANE ROSE 29B	Pro	
SLC BLACKBIRD 29H	BT FREON 24F	Sale	1068
	RED SLC BLACKBIRD 8B	WT	

EPDs BW WW YW Milk TM

Acc.

LOT
50

SLC Travler 261N Black Angus Bull

3/18/2003 SCL/261N Applied For

ALBERDA TRAVELER 416	D H D TRAVELER 6807	BW	88
BIGHILL FARMS TRAVELER 72/00	ALBERDA QUEEN KIMBERLY 222	Act.	640
ASPELUND'S MARYLEE 19'95	HOFF GREAT WESTERN S C 456	WW	1138
	FCP MARYLEE 31X	Adj.	1138
		YW	
BI ULTIMA 75E	OSU 6T6 ULTRA	ADG	2.95
BI PRIDE LUCY 77G	SITZ BARBARAMF RF NELLE 4377	Pro	
BI PRIDE LUCY 231D	WK CASEY 2240	Sale	1055
	HYLINE PRIDE LUCY	WT	

EPDs BW WW YW Milk TM

Acc.



SEVERTSON

Black Angus Bulls

LOT
51

Black Angus Bull

SLC Trawler 271N

3/23/2003 SCL/271N 1159944

ALBERDA TRAVELER 416	D H D TRAVELER 6807	BW	82
BIGHILL FARMS TRAVELER 72/00	ALBERDA QUEEN KIMBERLY 222	Act.	665
ASPELUND'S MARYLEE 19'95	HOFF GREAT WESTERN S C 456	WW	1165
	FCP MARYLEE 31X	Adj.	3.32
		YW	1035
BT FREON 24F	BEARTOOTH ICE 82D	ADG	
SLC REBELLO 70J	ERISKAY OF ROLLIN ROCK 7222	Pro	
RED TASSEL REBELLO 56Y	RED BLUE SPRUCE DYNAMIC 24W	Sale	
	RED TASSEL REBELLO 67W	WT	

EPDs	BW	WW	YW	Milk	TM
------	----	----	----	------	----

Acc.

LOT
52

Black Angus Bull

SLC Dateline 76N

2/4/2003 SCL/76N Applied For

DHD TRAVELER 6807	QAS TRAVELER 23-4	BW	84
CONNELLY DATELINE	BEMINDFUL MAID OHD 0807	Act.	618
EILA EILA OF CONANGA	SCOTCH CAP	WW	1095
	ELLA WILA OF CONANGA	Adj.	3.08
		YW	1045
GINGER HILL DUSTER 89	QAS TRAVELER 23-4	ADG	
MVF TIBBIE 14C	GINGER HILL DAWN 26	Pro	
MVF TIBBIE 20W	BROST POWER DRIVE	Sale	
	MVF TIBBIE 15T	WT	

EPDs	BW	WW	YW	Milk	TM
------	----	----	----	------	----

Acc.

LOT
54

Black Angus Bull

DCC Nugget 3N

2/5/2003 DCC/3N 1187109

B/R NEW DESIGN 036	VDAR NEW TREND 315	BW	95
B/R NEW FRONTIER 095	B/R BLACKCAP EMPRESS 76	Act.	835
WHITE FENCE PRIDE H1	CONNELLY DATELINE	WW	1288
	PLEASANT PILL OF CONANGA	Adj.	3.41
		YW	1290
MINBURN LANCER 73B	ANGUS ACRES LANCER 60U	ADG	
TAF ATLANTA 26E	DWW MINBURN ALVA QUEEN 30Y	Pro	
TAF ATLANTA 118A	SAR BOLD PLAYBOY 6914	Sale	
	TAF ATLANTA 25T	WT	

EPDs	BW	WW	YW	Milk	TM
------	----	----	----	------	----

Acc.	4.2	40	71	22	42
	PE	PE	PE	PE	



DCC New Trend 5N



SLC Trawler 271N

LOT
53

Black Angus Bull

JLH Nikon 2N

2/4/2003 JLH/2N 1183024

SUMMITCREST PRIME CUT 1G42	FINKS 5522-6148	BW	90
BASIN PRIME CUT 354K	SUMMITCREST BARBARA 0874	Act.	810
BASIN HEIRESS 353	BASIN E Z	WW	1204
	BASIN HEIRESS 7240	Adj.	3.31
		YW	1205
STEVENSON ROYCE 741C	GDAR ROYCE 131	ADG	
STEVENSON PRIDE LADY 804E	AHLGREN'S ESTELLA 2758 ETE	Pro	
STEVENSON PRIDE LADY 832C	BASIN EMULATION 5653	Sale	
	JRS PRIDE LADY 171M	WT	

EPDs	BW	WW	YW	Milk	TM
------	----	----	----	------	----

Acc.	4.2	31	55	24	40
	PE	PE	PE	PE	



DCC Nugget 3N

LOT
55

Black Angus Bull

DCC New Trend 5N

2/21/2003 DCC/5N 1183028

CONNELLY DATELINE	D H D TRAVELER 6807	BW	91
WCC TIMELINE J4	EILA EILA OF CONANGA	Act.	780
WCC EVERGREEN D98	LEACHMAN RIGHT TIME	WW	1195
	WOODHILL EVERGREEN 76C	Adj.	3.38
		YW	1210
SITZ S L S RAINMAKER 7596	G D A R RAINMAKER 340	ADG	
V A R PRIDELLA 0005	SLS BARBARA PERFECTION 2571	Pro	
V A R PRIDELLA 8081	V A R GATEWAY 4101	Sale	
	V D A R PRIDELLA 437	WT	

EPDs	BW	WW	YW	Milk	TM
------	----	----	----	------	----

Acc.	3.7	37	69	16	35
	31	30	14	21	



SEVERTSON

Black Angus Bulls

LOT
56

Black Angus Bull

JDS Nitro 7N

2/23/2003 JDS/7N 1183025

CONNEALY DATELINE	D H D TRAVELER 6807	BW	90
WCC TIMELINE J4	EILA EILA OF CONANGA	Act.	705
WCC EVERGREEN D98	LEACHMAN RIGHT TIME	WW	1187
	WOODHILL EVERGREEN 76C	Adj.	3.08
MINBURN LANCER 73B	ANGUS ACRES LANCER 60U	ADG	1195
ANDERS MISS ROSEBUD 7E	DWW MINBURN ALVA QUEEN 30Y	Pro	
WICKLOW MISS ROSEBUD 3B	VERMILION TOP GUY 2078	Sale	
	WICKLOW MISS ROSEBUD 14S	WT	

EPDs	BW	WW	YW	Milk	TM
	4.2	34	54	9	26
Acc.	PE	PE	PE	PE	



JDS Nitro 7N

LOT
57

Black Angus Bull

Strathisla Widespread 85N

2/5/2003 ISLA/85N 1156150

WHITESTONE WIDESPREAD MB	N BAR EMULATION EXT	BW	90
BLACK RIDGE W WIDESPREAD 2K	M B RACHEL 2173	Act.	618
BLACK RIDGE BRITTA 9F	WHITESTONE FLY TRAVELER 3006	WW	1148
	BLACK RIDGE BRITTANY 6X	Adj.	3.31
CHICO HANNIBAL 43H	TC STOCKMAN 365	ADG	1169
STRATHISLA ATHENA 16'01	CHICO ROSEBUD 2E	Pro	
ISLA BANK BERGETTA 12E	TC STOCKMAN 2164	Sale	
	ISLA BANK BERGETTA 7A	WT	

EPDs	BW	WW	YW	Milk	TM
	4.2	47	82	19	42
Acc.	PE	PE	PE	PE	

LOT
58

Black Angus Bull

Strathisla Widespread 95N

2/11/2003 ISLA/95N 1156145

WHITESTONE WIDESPREAD MB	N BAR EMULATION EXT	BW	78
BLACK RIDGE W WIDESPREAD 2K	M B RACHEL 2173	Act.	624
BLACK RIDGE BRITTA 9F	WHITESTONE FLY TRAVELER 3006	WW	1102
	BLACK RIDGE BRITTANY 6X	Adj.	3.21
STEVENSON ROYCE 741C	G D A R ROYCE 131	ADG	1048
STRATHISLA PRIMROSE 11K	AHLGRENS ESTELLA 2758 E T E	Pro	
ISLA BANK PRIMROSE 8A	L A MAGIC	Sale	
	ISLA BANK PRIMROSE 1T	WT	

EPDs	BW	WW	YW	Milk	TM
	4.2	47	82	19	42
Acc.	PE	PE	PE	PE	

LOT
59

Black Angus Bull

Strathisla Traveler 211N

3/8/2003 ISLA/211N 1176564

ALBERDA TRAVELER 416	D H D TRAVELER 6807	BW	78
BIGHILL FARMS TRAVELER 72/00	ALBERDA QUEEN KIMBERLY 222	Act.	602
ASPELUND'S MARYLEE 19'95	HOFF GREAT WESTERN S C 456	WW	1088
	FCP MARYLEE 31X	Adj.	3.11
TC STOCKMAN 2164	TC STOCKMAN 365	ADG	1062
STRATHISLA AUTUMN ROSE 4'99	CHICO ROSEBUD 2E	Pro	
ISLA BANK BARBARA ROSE 23'92	TC STOCKMAN 2164	Sale	
	ISLA BANK BERGETTA 7A	WT	

EPDs	BW	WW	YW	Milk	TM
	4.2	47	82	19	42
Acc.	PE	PE	PE	PE	

LOT
60

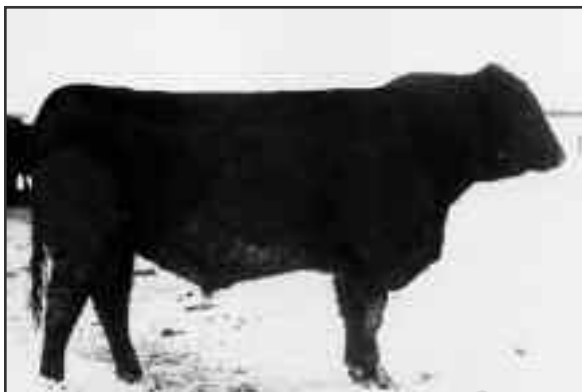
Black Angus Bull

AHVA Stockman 02M

3/20/2002 AHVA/02M 1117584

WIWA CREEK STOCKMAN 25'95	APEX STOCKMAN 061	BW	98
ARDIMERE STOCKMAN 15K	WIWA CREEK EVERGREEN 43'89	Act.	
DOUBLE FOUR EVENING TINGE 60F	HF LANCER 77D	WW	
	DOUBLE FOUR EVENING TINGE 51D	Adj.	
DENABERA NORTHERN ED 8D	MLA NORTHERN TIMES 33Y	ADG	
ARDIMERE SALLY ANNE 2H	CORVALLIS EDNA 18'86	Pro	
BETIR SALLY ANNE 511	MUSKIKI INDY OF TWO M 26Z	Sale	
	GET-A-LONG SALLY ANNE 0111	WT	

EPDs	BW	WW	YW	Milk	TM
	4.2	47	82	19	42
Acc.	PE	PE	PE	PE	



AHVA Resistol 041M

LOT
61

Black Angus Bull

AHVA Resistol 041M

4/4/2002 AHVA/041M 1117641

ASPELUND RESISTOL 19G	TJR KRUGERRAND Z099	BW	82
PENABERA REGISTOL 9K	ASPELUND'S DUCHESS 3'95	Act.	
PENABERA ADVENTURE KARAMA 10B	MLA NORTHERN TIMES 33Y	WW	
	TLP ADVENTURE KARAMA 1U	Adj.	
BSL WALKER 5F	HF WALK-ON 14C	ADG	
MADER ERICA 41J	TRAILVIEW ATALANTA 40'87	Pro	
SPARLING EULIMA 31C	LOR WIN'S BEAR 17A	Sale	
	SPARLING EULIMA 51Z	WT	

EPDs	BW	WW	YW	Milk	TM
	4.2	47	82	19	42
Acc.	PE	PE	PE	PE	



SEVERTSON

Black Angus Bulls

LOT
62

Black Angus Bull

SLC Stockman 135M

2/22/2002 SCL/135M 1141981

TC STOCKMAN 365	TC STOCKMAN	BW	86
MVF STOCKMAN 47K	TC PRIDE 0014	Act.	695
BICKFORD BURGESS 22A	Q A S TRAVELER 23-4	WW	1210
	BICKFORD BURGESS 38Y	Adj.	3.20
	BEARTOOTH ICE 82D	YW	1704
BT FREON 24F	ERISKAY OF ROLLIN ROCK 7222	ADG	
SLC PRALEE 77J	RED TASSEL CHEROKEE 24S	Pro	
RED TASSEL PRALEE 163W	RED LEACHMAN PRALEE 1578	Sale	
		WT	

EPDs	BW	WW	YW	Milk	TM
	4.7	26	49	14	27
Acc.	12	12	9	13	



SLC Stockman 135M

LOT
63

Black Angus Bull

Penabera Fullback 10M

1/15/2002 GMB/10M 1135460

LEACHMAN FULLBACK	PJM POWERPOINT	BW	85
RITO 9FB3 OF 5H11 FULLBACK	RACHEL BONANZA 341 GDAR	Act.	
RITA 5H11 OF 1B14 RITO 9J9	RITO 9J9 OF B156 7T26	WW	
	SHORITA 1B14 OF 9R4 SE	Adj.	
	HARTS WILD TURKEY 5020	YW	
WILLABAR TURKEY 56X	BRAERIDGE PRIDE 8N	ADG	
PENABERA BLACKBIRD 7A	EBON HILL CANNON 82'80	Pro	
BLACK BROWE BLACKBIRD 83R	BRAZEAU BLACKBIRD 25N	Sale	
		WT	

EPDs	BW	WW	YW	Milk	TM
Acc.					

LOT
64

Black Angus Bull

Penabera King Kong 53M

3/9/2002 GMB/53M 1100267

ASPELUND RESISTOL 19G	TJR KRUGERRAND Z099	BW	104
PENABERA REGISTOL 9K	ASPELUNDS DUCHESS 3'95	Act.	
PENABERA ADVENTURE KARAMA 10B	MLA NORTHERN TIMES 33Y	WW	
	TLP ADVERTURE KARAMA 1U	Adj.	
	BAND 234 OF IDEAL 3163	YW	
QAS TRAVELER 23-4	QAS BLACKBIRD EVE 601	ADG	
GNS QUEEN SUSAN 6D	DMM JOLT 7Y	Pro	
WINDOVER QUEEN SUSAN 15B	CORVALLIS QUEEN SUSAN 5'86	Sale	
		WT	

EPDs	BW	WW	YW	Milk	TM
Acc.					

LOT
65

Black Angus Bull

Penabera Heat Seeker 58M

3/22/2002 GMB/58M 1113157

RED YY RED KNIGHT 640F	RED YY 23L TOPPER 408D	BW	78
RED YY HEAT 902J	RED TOP GOLDIE 40U	Act.	
RED LINDA DEVOLANE 2X	RED LEACHMAN CURNT VALUE	WW	
	RED URAGA FRADO 17U	Adj.	
	BATSCHOL LAD 9U	YW	
MUSKIKI INDY OF TWO M 26Z	PRIDE OF TWO M 38 84	ADG	
ARDIMERE JOY 14G	RED GET-A-LONG BAILEY 2109	Pro	
RED BETOR DILLY DALLY 41D	RED BET OR BURGANDY 204	Sale	
		WT	

EPDs	BW	WW	YW	Milk	TM
Acc.					





SEVERTSON Red Angus Bulls

Red YY Storm 901J

Sire of Lots 66 - 71

A Top Gun son owned with Triple S and Chickadee Farms. He sires calves that are born easy and are heavy muscled. His daughters have plenty of milk with excellent teats and udders. Storm sires very easy fleshing cattle.



Red SLC Storm 121N



Red SLC Storm 152N



Red SLC Storm 118N

LOT 66

Red Angus Bull

Red SLC Storm 121N

2/11/2003 SCL/121N 1159916

RED YY 408D TOP GUN 614F	RED YY 23L TOPPER 408D	BW	92
RED YY STORM 901J	RED DEVOLANE GOLDIE 40C	Act. WW	682
RED DEVOLANE ROSE 29B	RED KC CHFLNE LOIS 5U	Adj. YW	1046
	RED ROZINE FRADO 29R	ADG	3.10
RED SSS BAR-NONE 313D	RED SSS BARON 695A	Pro Sale WT	1068
RED SLC CHEROVIANN 166H	RED SSS CASHMERE 558Z		
RED SLC CHEROVIANN 61C	RED LEACHMAN MONU 2X		
	RED BL SPRUCE CHEROVIANN 106W		

EPDs	BW	WW	YW	Milk	TM
	0.5	15	29	10	17
Acc.	PE	PE	PE	PE	PE

LOT 67

Red Angus Bull

Red SLC Storm 152N

2/17/2003 SCL/152N 1159914

RED YY 408D TOP GUN 614F	RED YY 23L TOPPER 408D	BW	78
RED YY STORM 901J	RED DEVOLANE GOLDIE 40C	Act. WW	614
RED DEVOLANE ROSE 29B	RED KC CHFLNE LOIS 5U	Adj. YW	1040
	RED ROZINE FRADO 29R	ADG	3.06
RED BLUE SPRUCE LOCKSLEY 84E	RED LMAN ROBIN HOOD 1174B	Pro Sale WT	1060
RED SLC INA 28G	RED BLUE SPRUCE LYDA 122X		
RED SLC INA 41B	RED BLUE SPRUCE DYNAMIC 12X		
	RED CLAYSMORE INA 76T		

EPDs	BW	WW	YW	Milk	TM
	-1.0	15	34	8	16
Acc.	PE	PE	PE	PE	PE

LOT 68

Red Angus Bull

Red SLC Storm 118N

2/11/2003 SCL/118N 1159916

RED YY 408D TOP GUN 614F	RED YY 23L TOPPER 408D	BW	90
RED YY STORM 901J	RED DEVOLANE GOLDIE 40C	Act. WW	702
RED DEVOLANE ROSE 29B	RED KC CHFLNE LOIS 5U	Adj. YW	1162
	RED ROZINE FRADO 29R	ADG	3.37
RED SSS BAR-NONE 313D	RED SSS BARON 695A	Pro Sale WT	1185
RED SLC PRALEE 104G	RED SSS CASHMERE 558Z		
RED TASSEL PRALEE 106X	RED TASSEL BLIZZARD 60U		
	RED TASSEL PRALEE 87K		

EPDs	BW	WW	YW	Milk	TM
	0.1	9	18	7	11
Acc.	PE	PE	PE	PE	PE

SEVERTSON

Red Angus Bulls

LOT
69

Red Angus Bull
Red SLC Storm 40N

1/27/2003 SCL/40N 1159911

RED YY 408D TOP GUN 614F	RED YY 23L TOPPER 408D	BW	85
RED YY STORM 901J	RED DEVOLANE GOLDIE 40C	Act.	628
RED DEVOLANE ROSE 29B	RED KC CHFLNE LOIS 5U	WW	1110
	RED ROZINE FRADO 29R	Adj.	YW
RED TASSEL HEAVENLY 24B	RED LEACHMAN HEAVENLY 8141	ADG	3.25
RED WILD ROSE ANGEL 77D	RED TASSEL PRALEE 16Z	Pro	
RED WILD ROSE BLACKCLASS 12B	RED BLUE SPRUCE CADILLAK 38Z	Sale	1122
	RED BLUE SPRUCE BLACKCLASS 74Z	WT	

EPDs	BW	WW	YW	Milk	TM
	-2.4	10	21	6	10
Acc.	PE	PE	PE	PE	PE



Red SLC Storm 40N

LOT
70

Red Angus Bull
Red SLC Storm 72N

2/3/2003 SCL/72N 1159905

RED YY 408D TOP GUN 614F	RED YY 23L TOPPER 408D	BW	78
RED YY STORM 901J	RED DEVOLANE GOLDIE 40C	Act.	632
RED DEVOLANE ROSE 29B	RED KC CHFLNE LOIS 5U	WW	1045
	RED ROZINE FRADO 29R	Adj.	YW
RED BIEBER DSGN 1325-082	SCHULER DYN 027-082	ADG	3.32
RED SLC BLACKBIRD 8B	RED RAB INDIGO 1073-982	Pro	
RED BLUE SPRUCE BLACKBIRD 41Z	RED BLUE SPRUCE DYNAMIC 24W	Sale	1090
	RED BLUE SPRUCE BLACKBIRD 8U	WT	

EPDs	BW	WW	YW	Milk	TM
	-0.8	11	21	5	11
Acc.	PE	PE	PE	PE	PE

LOT
71

Red Angus Bull
Red SLC Storm 169N

2/23/2003 SCL/169N 1159925

RED YY 408D TOP GUN 614F	RED YY 23L TOPPER 408D	BW	78
RED YY STORM 901J	RED DEVOLANE GOLDIE 40C	Act.	643
RED DEVOLANE ROSE 29B	RED KC CHFLNE LOIS 5U	WW	1060
	RED ROZINE FRADO 29R	Adj.	YW
RED SSS BAR-NONE 313D	RED SSS BARON 695A	ADG	3.18
RED SLC LANA 200G	RED SSS CASHMERE 558Z	Pro	
RED TASSEL LANA 71Y	RED TASSEL BLIZZARD 60U	Sale	1076
	RED TASSEL LANA 85T	WT	

EPDs	BW	WW	YW	Milk	TM
	0.2	12	26	10	16
Acc.	PE	PE	PE	PE	PE

LOT
72

Red Angus Bull
Red SLC King 43N

1/29/2003 SCL/43N Applied For

RED BLAZE V415	RED VGW FIRE KING 128	BW	78
RED GOLD-BAR KING V415 107K	RED BJB LAKOTA 0117	Act.	604
RED KENRAY MISS DAWN 114F	RED BHC STRYKER	WW	1069
	RED MOOSE CREEK 65U	Adj.	YW
RED YY STORM 901J	RED YY 408D TOP GUN 614F	ADG	3.22
RED SLV PARLEE 35L	RED DEVOLANE ROSE 29B	Pro	
RED SLC PRALEE 165H	RED SSS BAR-NONE 313D	Sale	1057
	RED TASSEL PRALEE 163W	WT	

EPDs	BW	WW	YW	Milk	TM
Acc.					

LOT
73

Red Angus Bull
Red SLC King 90M

2/10/2002 SCL/90M 1140390

RED BLAZE V415	RED VGW FIRE KING 128	BW	82
RED GOLD-BAR KING V415 107K	RED BJB LAKOTA 0117	Act.	604
RED KENRAY MISS DAWN 114F	RED BHC STRYKER	WW	3.37
	RED MOOSE CREEK 65U	Adj.	YW
RED YY 408D TOP GUN 614F	RED YY 23L TOPPER 408D	ADG	3.32
RED YY 614 ROSE 801H	RED DEVOLANE GOLDIE 40C	Pro	
RED DEVOLANE ROSE 29B	RED KC CHFLNE LOIS 5U	Sale	1628
	RED ROZINE FRADO 29R	WT	

EPDs	BW	WW	YW	Milk	TM
Acc.					



Red SLC Sensation 38N

LOT
74

Red Angus Bull
Red SLC Sensation 38N

1/27/2003 SCL/38N Applied For

GARDENS SENSATION 039 S1	SCHURRTOP FORTUNE 3261	BW	60
RED BASIN SENSATION 702E	GREEN GARDEN PROTET 739C	Act.	612
STEVENSON ELEMRERE 538C	IMPACT 2001 G G	WW	1032
	JRS ELEMRERE 977A	Adj.	YW
RED YY STORM 901J	RED YY 408D TOP GUN 614F	ADG	3.10
RED SLC LADY 122L	RED DEVOLANE ROSE 29B	Pro	
RED SLC LADY 65C	RED BLUE SPRUCE CHARTER 55Z	Sale	1061
	RED BLUE SPRUCE LADY 87Z	WT	

EPDs	BW	WW	YW	Milk	TM
Acc.					

SEVERTSON

Red Angus Bulls

LOT
75

Red Angus Bull

Red SLC Sensation 39N

1/27/2003 SCL/39N Applied For

GARDENS SENSATION 039 S1	SCHURRTOP FORTUNE 3261	BW	72
RED BASIN SENSATION 702E	GREEN GARDEN PROTET 739C	Act.	695
STEVENSON ELEMRERE 538C	IMPACT 2001 G G	WW	
	JRS ELEMRERE 977A	Adj.	1182
		YW	
RED YY STORM 901J	RED YY 408D TOP GUN 614F	ADG	3.34
RED SLC BLACKBIRD 69L	RED DEVOLANE ROSE 29B	Pro	
RED SLC BLACKBIRD 90H	RED SSS BAR-NONE 313D	Sale	1190
	RED BLUE SPRUCE BLACKBIRD 41Z	WT	

EPDs	BW	WW	YW	Milk	TM
------	----	----	----	------	----

Acc.



Red Pog Power Stroke 22N



Red Pog Spot light 27N

LOT
79

Red Angus Bull

Red Pog Clearcut 4N

1/9/2003 POG/4N 1172882

RED LCC HEAVEN OR BUST 1000B	RED LEACHMAN HEAVENLY 8141	BW	89
RED SSS BUST'N 596F	RED LMAN MARY 9003	Act.	870
RED SSS MISS VALENTINE 344X	RED SSS HIGH LINE 402M	WW	
	RED SSS MISS REDCAP 87T	Adj.	1328
		YW	
RED REMINGTON'S RED DRIVE 106D	RED DEKAP RED DRIVE 93K8	ADG	3.42
RED FLY AWAY HONORA 139H	RED REMINGTON'S BLACKBIRD 115B	Pro	
RED TOWAW LAKIMA 134D	RED LMAN ROYALTY 114B	Sale	1404
	RED TOWAW LAKIMA 82B	WT	

EPDs	BW	WW	YW	Milk	TM
------	----	----	----	------	----

Acc.	0.3	32	52	14	23
	PE	PE	PE	PE	

LOT
76

Red Angus Bull

Red Pog Barbwire 17N

1/19/2003 POG/17N 1172881

RED BHC STRYKER	RED RCRA WHEEL'O FORTUNE	BW	87
RED BHC SANDSTONE	AHE FANCY LADY 411	Act.	675
RED RN-AMBER -083	RED RANCHERO GRANDE	WW	
	RED PBC 373 CN151	Adj.	1085
		YW	
RED REMINGTON'S RED DRIVE 106D	RED DEKAP RED DRIVE 93K8	ADG	3.02
RED FLY AWAY HONORA 139H	RED REMINGTON'S BLACKBIRD 115B	Pro	
RED TOWAW LAKIMA 134D	RED LMAN ROYALTY 114B	Sale	1045
	RED TOWAW LAKIMA 82D	WT	

EPDs	BW	WW	YW	Milk	TM
------	----	----	----	------	----

Acc.	0.2	19	25	6	16
	PE	PE	PE	PE	

LOT
77

Red Angus Bull

Red Pog Power Stroke 22N

1/20/2003 POG/22N 1172889

RED VGW BONUS 429	RED BIEBER DESIGN 4140	BW	91
RED BADLANDS BONUS 702	VGW 4430 CHIEF 502	Act.	710
RED RACHEL R405	RED FCC RAMBO 502	WW	
	RED OLE LANA 853 0076	Adj.	1195
		YW	
RED REMINGTON'S RED DRIVE 106D	RED DEKAP RED DRIVE 93K8	ADG	3.34
RED FLY AWAY HONORA 139H	RED REMINGTON'S BLACKBIRD 115B	Pro	
RED TOWAW LAKIMA 134D	RED LMAN ROYALTY 114B	Sale	1235
	RED TOWAW LAKIMA 82D	WT	

EPDs	BW	WW	YW	Milk	TM
------	----	----	----	------	----

Acc.	3.8	35	55	11	28
	PE	PE	PE	PE	

LOT
78

Red Angus Bull

Red Pog Spot Light 27N

1/26/2003 POG/27N 1172888

RED VGW BONUS 429	RED BIEBER DESIGN 4140	BW	93
RED BADLANDS BONUS 702	VGW 4430 CHIEF 502	Act.	690
RED RACHEL R405	RED FCC RAMBO 502	WW	
	RED OLE LANA 853 0076	Adj.	1182
		YW	
RED REMINGTON'S RED DRIVE 106D	RED DEKAP RED DRIVE 93K8	ADG	3.38
RED FLY AWAY HONORA 139H	RED REMINGTON'S BLACKBIRD 115B	Pro	
RED TOWAW LAKIMA 134D	RED LMAN ROYALTY 114B	Sale	1210
	RED TOWAW LAKIMA 82D	WT	

EPDs	BW	WW	YW	Milk	TM
------	----	----	----	------	----

Acc.	3.8	35	55	11	28
	PE	PE	PE	PE	



Red Pog Clearcut 4N



SEVERTSON

Red Angus Bulls

LOT
80

Red Angus Bull

Red Pog Bust'n 21N

1/19/2003 POG/21N 1146190

RED LCC HEAVEN OR BUST 1000B	RED LEACHMAN HEAVENLY 8141	BW	88
RED SSS BUST'N 596F	RED LMAN MARY 9003	Act.	740
RED SSS MISS VALENTINE 344X	RED SSS HIGH LINE 402M	WW	1183
	RED SSS MISS REDCAP 87T	Adj.	3.34
		YV	1220
RED LMAN KILOWATT 8791	RED LEACHMAN KINGDOM 8251	ADG	
RED TASSEL PRALEE 191D	LEACHMAN LARKABA 5664	Pro	
RED TASSEL PRALEE 7S	RED LCHMN YELLOWSTN 1761	Sale	
	RED LEACHMAN PRALEE 1578	WT	

EPDs	BW	WW	YW	Milk	TM
Acc.	-1.2	19	33	13	22
	36	22	21	20	

LOT
81

Red Angus Bull

Red Pog Chief 35N

1/30/2003 POG/35N 1146181

RED LEACHMAN CHIEFDOM 2X	RED LEACHMAN KINGDOM 8251	BW	89
RED MAC CHIEF 26D	LEACHMAN RD REV 5901	Act.	715
RED MAC MISS PATHY 48Z	RED THREE D PATHFINDER 22'86	WW	1065
	RED MAC MISS BARDO 62S	Adj.	3.04
		YV	1090
RED HCC SELECTION 7A	RED DEKAP RED DALLES 345	ADG	
RED DAN'S VIOLET 4'93	RED MISS HENDERSON 10'87	Pro	
DAN'S VIOLET 5'91	RED RIATTA 28X	Sale	
	DAN'S VIOLET 2'89	WT	

EPDs	BW	WW	YW	Milk	TM
Acc.	0.2	13	23	3	10
	34	26	21	21	

LOT
82

Red Angus Bull

Red Pog Chief 59N

2/16/2003 POG/59N 1146192

RED LEACHMAN CHIEFDOM 2X	RED LEACHMAN KINGDOM 8251	BW	90
RED MAC CHIEF 26D	LEACHMAN RD REV 5901	Act.	695
RED MAC MISS PATHY 48Z	RED THREE D PATHFINDER 22'86	WW	1164
	RED MAC MISS BARDO 62S	Adj.	3.28
		YV	1174
RED HCC DALLES 13'93	RED DEKAP RED DALLES 345	ADG	
RED BODON COPPER LADY 18E	HENDERSON MISS DIANE 21'90	Pro	
RED TOP COPPER LADY 34B	RED MOSSEND WAMPUM 758	Sale	
	RED KALWAY COPPER LADY 6X	WT	

EPDs	BW	WW	YW	Milk	TM
Acc.	0.5	18	29	6	14
	32	24	19	19	

LOT
83

Red Angus Bull

Red Pog Chief 62N

2/20/2003 POG/62N 1146196

RED LEACHMAN CHIEFDOM 2X	RED LEACHMAN KINGDOM 8251	BW	97
RED MAC CHIEF 26D	LEACHMAN RD REV 5901	Act.	765
RED MAC MISS PATHY 48Z	RED THREE D PATHFINDER 22'86	WW	1218
	RED MAC MISS BARDO 62S	Adj.	3.45
		YV	1268
CLONABREEM CREATION 54C	CUDLOBE BLACK STAR 92X	ADG	
RED DUCHESS OF DALRENE 60F	CLONABREEM ANNIE 5X	Pro	
DUCHESS OF DALRENE 90A	SOUTHOLM EXTRA 125W	Sale	
	SUNMOUND DUCHESS 54U	WT	

EPDs	BW	WW	YW	Milk	TM
Acc.	2.8	28	47	8	23
	35	26	21	20	

LOT
84

Red Angus Bull

Red Pog Bed Rock 53N

2/11/2003 POG/53N 1146211

RED CR COPPER CHIEF 28G	RED MRM-BUF COPPER CHF 9409	BW	91
RED BELLE TERRE COPPER CHF 72L	RED CR LARKABA 68Y	Act.	665
RED RKY MTN RIVIERA 7G	RED RAZOR'S EDGE 8D	WW	1188
	RED MISS RIVER TOP 62W	Adj.	3.12
		YV	1192
RED FLY AWAY HI FIRE 101H	RED LINE BLAZE 99R	ADG	
RED FLY AWAY KAREN 174K	RED SSS FIREFLY 454E	Pro	
RED FLY AWAY HAWAII 135H	RED REMINGTON'S RED DRIVE 106D	Sale	
	RED FLY AWAY DAKOTA 59D	WT	

EPDs	BW	WW	YW	Milk	TM
Acc.	2.8	28	47	8	23
	35	26	21	20	

LOT
85

Red Angus Bull

Red Ardimere Clipper 5M

1/8/2002 GHB/5M 1140080

RED LEACHMAN RED TOP 8658	COPPER TOP CHIEF 301	BW	86
RED CR TOP 54D	LEACHMAN MARGE 7045	Act.	
RED CR DEXAN 56Z	RED LAZY M LEADER 11W	WW	
	RED CR DEXAN 14T	Adj.	
		YV	
RED ROYAL BLAZE 93B	RED LINE BLAZE 99R	ADG	
RED TOP GOLDIE 21E	RED ROYAL VALLEY UCOLA 30T	Pro	
RED ARM RIVER GOLDIE 31X	RED FLYING K ECLIPSE 55U	Sale	
	RED GIRVINMERE GOLDIE 199U	WT	

EPDs	BW	WW	YW	Milk	TM
Acc.					

LOT
86

Red Angus Bull

Red Ardimere Center Stage 13M

1/16/2002 GHB/13M 1140079

RED FCC RAMBO 50Z	RED CV FOURSIMES	BW	87
RED PANHANDLE CENTRESTAGE	COPPER LASS 2392	Act.	
PANHANDLE LUCY 802B	RCN SANDHILL CHF 404	WW	
	PANHANDLE BELLE 5085	Adj.	
		YV	
RED ROYAL BLAZE 93B	RED LINE BLAZE 99R	ADG	
RED TOP GILDA 19E	RED ROYAL VALLEY UCOLA 30T	Pro	
RED TOP GILDA 19X	RED TOP FIRST-CLASS 14T	Sale	
	RED LEACHMAN GILDA 1987	WT	

EPDs	BW	WW	YW	Milk	TM
Acc.					

LOT
87

Red Angus Bull

Red Ardimere Heat Seeker 47M

3/2/2002 GHB/47M 1140089

RED YY RED KNIGHT 640F	RED YY 23L TOPPER 408D	BW	81
RED YY HEAT 902J	RED TOP GOLDIE 40U	Act.	
RED LINDA DEVOLANE 2X	RED LEACHMAN CURNT VALUE	WW	
	RED URAGA FRADO 17U	Adj.	
		YV	
RED YY BOUNTY 722G	RED T3 CHIEF 2887	ADG	
RED ARDIMERE HAMILLEE 3J	RED DEVOLANE LINDA 2C	Pro	
RED ARDIMERE HAMILLEE 10G	RED LMAN KING ROB 8621	Sale	
	RED KALWAY HAMILLEE 3A	WT	

EPDs	BW	WW	YW	Milk	TM
Acc.					

Welcome....

Well folks it's been quite a year, but life goes on and soon it will be breeding time again. We have fed our bulls at home this winter and have 20 offered in the sale. Their feed has been silage, chopped hay and a bull ration of 80% oats, 10% barley, 10% corn, along with lots of fresh air and exercise in a 24 acre pasture. They were weighed and clipped on February 5, and all scored well when semen/scrotal tested on February 10.

With three breeds offered in this sale, we think there is something for everyone. We invite you to attend the sale March 8 at Severtson Sale barn or to view the bulls prior to the sale, just give us a call.

Good luck in your calving

Jim & Laurel



Chickadee Farm

Jim, Laurel, Jamie & Megan King

RR #4, Innisfail, AB T4G 1T9

Ph: (403) 227-6081

Cell: (403) 304-4717

www.chickadeefarm.com



Red YY Red Knight 640F

Sire of Lots 88 - 91

LOT

88

Red Angus Bull

Red YY Challenger 321N ET

2/4/2003 YY/312N 1168089

RED YY 23L TOPPER 408D	RED BJR TOPPER AGAIN 23L	BW	92
RED YY RED KNIGHT 640F	RED DEVOLANE ROZINE 8B	Act. WW	666
RED TOP GOLDIE 40U	RED LINE FLAME 11N	Act. YW	1196
	RED LINE GOLDIE 40K	ADG	-
RED KC CHFLNE LOIS 5U	RED LEACHMAN CHFLNE 5827	Pro Sale WT	1300
RED DEVOLANE ROSE 29B	RED KC LOIS 48S		
RED ROZINE FRADO 29R	RED BRA RON BARON		
	JOCELINE FRADO 7J		

EPDs	BW	WW	YW	Milk	TM
------	----	----	----	------	----

Acc.



Red YY Challenger 321N ET

YY CHICKADEE

Red Angus Bulls



Red YY Squire 333N ET



Red YY Squire 334N ET

LOT **89** *Red YY Squire 333N ET* Red Angus Bull

2/12/2003 YY/333N 1168092

RED YY 23L TOPPER 408D	RED BJR TOPPER AGAIN 23L	BW	87
RED YY RED KNIGHT 640F	RED DEVOLANE ROZINE 8B	Act.	628
RED TOP GOLDIE 40U	RED LINE FLAME 11N	WW	1108
	RED LINE GOLDIE 40K	Act.	1108
		YW	
RED BJR C-CHIEF 811	RCN CANYON CHIEF	ADG	-
RED DEVOLANE MISS JACK 12Z	BJR LAKOTA 356-416	Pro	1205
RED URRISAL FRADO 90U	RED PREMIER PATRIOT 16	Sale	
	RED ROZINE FRADO 29R	WT	

EPDs BW WW YW Milk TM

Acc.

LOT **90** *Red YY Squire 334N ET* Red Angus Bull

2/10/2003 YY/334N 1172438

RED YY 23L TOPPER 408D	RED BJR TOPPER AGAIN 23L	BW	86
RED YY RED KNIGHT 640F	RED DEVOLANE ROZINE 8B	Act.	700
RED TOP GOLDIE 40U	RED LINE FLAME 11N	WW	1156
	RED LINE GOLDIE 40K	Act.	1156
		YW	
RED BJR C-CHIEF 811	RCN CANYON CHIEF	ADG	-
RED DEVOLANE MISS JACK 12Z	BJR LAKOTA 356-416	Pro	1260
RED URRISAL FRADO 90U	RED PREMIER PATRIOT 16	Sale	
	RED ROZINE FRADO 29R	WT	

EPDs BW WW YW Milk TM

Acc.

LOT **91** *Red YY Squire 331N ET* Red Angus Bull

1/30/2003 YY/331N 1168091

RED YY 23L TOPPER 408D	RED BJR TOPPER AGAIN 23L	BW	80
RED YY RED KNIGHT 640F	RED DEVOLANE ROZINE 8B	Act.	594
RED TOP GOLDIE 40U	RED LINE FLAME 11N	WW	1005
	RED LINE GOLDIE 40K	Act.	1005
		YW	
RED BJR C-CHIEF 811	RCN CANYON CHIEF	ADG	-
RED DEVOLANE MISS JACK 12Z	BJR LAKOTA 356-416	Pro	1110
RED URRISAL FRADO 90U	RED PREMIER PATRIOT 16	Sale	
	RED ROZINE FRADO 29R	WT	

EPDs BW WW YW Milk TM

Acc.

LOT **92** *Red YY Chiefline 316N ET* Red Angus Bull

2/9/2003 YY/316N 1170125

RCN CANYON CHIEF	PBC D0202 6M H1112	BW	80
RED BJR C-CHIEF 811	RED RCN INDIGO-B4018	Act.	650
BJR LAKOTA 356-416	JHL DYNAMO 356	WW	1102
	LAKOTA 416-103	Act.	1102
		YW	
RED KC CHFLNE LOIS 5U	RED LEACHMAN CHFLNE 5827	ADG	-
RED DEVOLANE ROSE 29B	RED KC LOIS 48S	Pro	1200
RED ROZINE FRADO 29R	RED BRA RON BARON	Sale	
	JOCELINE FRADO 7J	WT	

EPDs BW WW YW Milk TM

Acc.

YY CHICKADEE

Red Angus Bulls



Red YY Rambler 302N

LOT
93

Red Angus Bull

Red YY Rambler 302N

2/4/2003 YY/302N 1148098

RED VGW RAMBLER 1000	RED BJR RAMBLER 5162	BW	58
RED CROWFOOT RAMBLER 1038L	RED VGW UMPIRE YUMA 9266	Act.	608
CROWFOOT VERNICE 907J	MVHF INNOVATOR 49B	WW	1084
	RED CROWFOOT VERNICE 133B	Act.	YW
RED YY 408D TOP GUN 614F	RED YY 23L TOPPER 408D	ADG	-
RED YY OWYHEE 102L	RED DEVOLANE GOLDIE 40C	Pro	1180
RED LINDA DEVOLANE 2A	RED PREMIER PATRIOT 16	Sale	WT
	RED LINDA DEVOLANE 2X		

EPDs	BW	WW	YW	Milk	TM
	-6.5	9	22	12	16
Acc.	33	23	17	13	



Red YY Rambler 322N

LOT
94

Red Angus Bull

Red YY Rambler 322N

1/7/2003 YY/322N 1148102

RED VGW RAMBLER 1000	RED BJR RAMBLER 5162	BW	82
RED CROWFOOT RAMBLER 1038L	RED VGW UMPIRE YUMA 9266	Act.	682
CROWFOOT VERNICE 907J	MVHF INNOVATOR 49B	WW	1180
	RED CROWFOOT VERNICE 133B	Act.	YW
RED TER-RON CARLTON 810H	RED SSS BOOM TOWN 260D	ADG	-
RED YY OWYHEE 122L	RED BRA HAWAMBA 10B	Pro	1280
RED DEVOLANE LINDA 2C	RED BIEBER DSIGN 1325-082	Sale	WT
	RED LINDA DEVOLANE 2X		

EPDs	BW	WW	YW	Milk	TM
	-2.1	13	19	14	21
Acc.	33	22	17	12	



Red YY Rambler 394N

LOT
95

Red Angus Bull

Red YY Rambler 394N

2/18/2003 YY/394N 1148105

RED VGW RAMBLER 1000	RED BJR RAMBLER 5162	BW	78
RED CROWFOOT RAMBLER 1038L	RED VGW UMPIRE YUMA 9266	Act.	568
CROWFOOT VERNICE 907J	MVHF INNOVATOR 49B	WW	1002
	RED CROWFOOT VERNICE 133B	Act.	YW
RED TER-RON CARLTON 810H	RED SSS BOOM TOWN 260D	ADG	-
RED PRIME TIME'S YY GOLDIE 940	RED BRA HAWAMBA 10B	Pro	1105
RED YY GOLDIE 940J	RED BUF CRK HOBBO 1961	Sale	WT
	RED TOP GOLDIE 40U		

EPDs	BW	WW	YW	Milk	TM
	-3.3	14	25	14	21
Acc.	33	22	16	12	



Red YY Cherokee 356N

LOT
96

Red Angus Bull

Red YY Cherokee 356N ET

3/16/2003 YY/356N 1172444

RED BUF CRK CHF 824-1658	RED BUF CRK CHIEF 092-824	BW	81
RED BFCK CHEROKEE CNYN 4912	BFLO CRK CARIE VC473	Act.	602
RED MRM 1431 8611 9109	RED BUF CRK CHEROKEE 1431	WW	1056
	RED MRM 8454 8219 8611	Act.	YW
RED LEACHMAN CURNT VALUE	RED LEACHMAN EBV 3531	ADG	-
RED LINDA DEVOLANE 2X	LCHMN ISABELLE 2852	Pro	1160
RED URAGA FRADO 17U	RED PREMIER PATRIOT 16	Sale	WT
	RED MESA CREEK OWYHEE 303H		

EPDs	BW	WW	YW	Milk	TM
Acc.					

YY CHICKADEE

Red Angus Bulls

LOT
97

Red Angus Bull
Red YY Rain 382N

1/23/2003 YY/382N 1148108

RED FORSTER CHIEF 7182ET	RED PBC D0202 6M H0904	BW	76
RED YY CHIEF 120L	RED MISS FORSTER CPRTOP 591	Act.	692
RED LINDA DEVOLANE 2X	RED LEACHMAN CURNT VALUE	WW	1095
	RED URAGA FRADO 17U	Act.	YW
	RED GLACIER LOGAN	ADG	-
RED FBAR TWO-TEN 92G	RED BADLANDS TIFFANY 210	Pro	1210
RED F BAR RAIN 282K	RED FBAC SOME R BETTER 1E	Sale	WT
RED F BAR RAIN 133H	RED F BAR RAIN 63F	WT	

EPDs	BW	WW	YW	Milk	TM
	-1.2	26	41	20	33
Acc.	32	22	17	13	



Red YY Rain 382N

LOT
98

Red Angus Bull
Red YY 303N

1/22/2003 YY/303N 1148099

RED FORSTER CHIEF 7182ET	RED PBC D0202 6M H0904	BW	76
RED YY CHIEF 120L	RED MISS FORSTER CPRTOP 591	Act.	658
RED LINDA DEVOLANE 2X	RED LEACHMAN CURNT VALUE	WW	1170
	RED URAGA FRADO 17U	Act.	YW
	RED YY 23L TOPPER 408D	ADG	-
RED YY 408D TOP GUN 614F	RED DEVOLANE GOLDIE 40C	Pro	1270
RED YY ROSE 111L	RED T3 CHIEF 2887	Sale	WT
RED YY T-3 ROSE 701G	RED DEVOLANE ROSE 29B	WT	

EPDs	BW	WW	YW	Milk	TM
	-0.6	18	33	13	22
Acc.	32	22	17	13	

LOT
99

Red Angus Bull
Red YY Butler 311N

1/29/2003 YY/311N 1148109

RED SSS BOOM TOWN 260D	RED SSS BOOMER 803B	BW	89
RED TER-RON CARLTON 810H	RED SSS SOAPY 542Y	Act.	674
RED BRA HAWAMBA 10B	UMPIRE 1000	WW	1050
	RED BRA FROSTY 10T	Act.	YW
	RED T3 CHIEF 2887	ADG	-
RED YY 408D TOP GUN 614F	BIEBER CHIEFTON 2803	Pro	1160
RED YY ROSE 111L	BIEBER HANNAH 2887	Sale	WT
RED YY T-3 ROSE 701G	RED KC CHFLNE LOIS 5U	WT	
RED DEVOLANE ROSE 29B	RED ROZINE FRADO 29R		

EPDs	BW	WW	YW	Milk	TM
	1.1	26	41	14	27
Acc.	36	27	22	22	



Red YY Butler 354N

LOT
100

Red Angus Bull
Red YY Butler 364N

2/25/2003 YY/364N 1148113

RED SSS BOOM TOWN 260D	RED SSS BOOMER 803B	BW	96
RED TER-RON CARLTON 810H	RED SSS SOAPY 542Y	Act.	648
RED BRA HAWAMBA 10B	UMPIRE 1000	WW	1138
	RED BRA FROSTY 10T	Act.	YW
	RED BLUE SPRUCE MIRAGE 19C	ADG	-
RED ROLL ALONG HALE 46H	RED WATERVIEW LEE D 21B	Pro	1240
RED BERGEN KAYLYN	RED LOOMIS 21Y	Sale	WT
RED ROLL ALONG AEOLIAN 3A	RED SSS DYNA ROSE 33W	WT	

EPDs	BW	WW	YW	Milk	TM
	3.3	36	50	16	34
Acc.	35	24	19	19	

LOT
101

Red Angus Bull
Red YY Butler 326N

1/23/2003 YY/326N 1148107

RED SSS BOOM TOWN 260D	RED SSS BOOMER 803B	BW	80
RED TER-RON CARLTON 810H	RED SSS SOAPY 542Y	Act.	656
RED BRA HAWAMBA 10B	UMPIRE 1000	WW	1074
	RED BRA FROSTY 10T	Act.	YW
	RED BRYLOR DYNASTAR 19S	ADG	-
RED BRYLOR YOUNGBLOOD 22Y	RED LPC EMILY 24U	Pro	1175
RED DEVOLANE LINDA 2F	RED LEACHMAN CURNT VALUE	Sale	WT
RED LINDA DEVOLANE 2X	RED URAGA FRADO 17U	WT	

EPDs	BW	WW	YW	Milk	TM
	-1.6	18	25	16	25
Acc.	35	26	21	22	

LOT
102

Red Angus Bull
Red YY Butler 347N

3/4/2003 YY/347N 1194079

RED SSS BOOM TOWN 260D	RED SSS BOOMER 803B	BW	100
RED TER-RON CARLTON 810H	RED SSS SOAPY 542Y	Act.	784
RED BRA HAWAMBA 10B	UMPIRE 1000	WW	1226
	RED BRA FROSTY 10T	Act.	YW
	R&J ATLAS 3201	ADG	-
RED THREE D ATLAS 2'88	RED TOWAW ANEXA 5P	Pro	1225
RED DEVOLANE LINDA 2F	RED SIX MILE LICORICE 274S	Sale	WT
RED SIX MILE BARONESS 920W	RED RBRTS BARONESS 518S	WT	

EPDs	BW	WW	YW	Milk	TM
	2.8	34	49	18	35
Acc.	35	26	22	22	

YY CHICKADEE

Red Angus Bulls



Red YY 310N

LOT
103

Red YY 310N

Red Angus Bull

3/23/2003 YY/310N 1194018

RED GRL SIR RAMBO 9A	RED FCC RAMBO 502	BW	94
RED SHODEREE RAMBO 72D	RED WEBB'S ELSA 373T	Act.	872
RED MC PARENA 72T	RED FHJ PATRIOT 5020	WW	1315
	RED MC SERENA 72L	Act.	1315
		YW	-
RED BJR THE DUKE 502-5176	BJR YODLER 3229	ADG	-
RED DEVOLANE DONNA 1C	BJR FREYJA 2258-288	Pro	1250
RED DONNA DEVOLANE 1Y	RED MAYBRIDGE CORONET 6T	Sale	1250
	NATALIA FRADO 17N	WT	

EPDs	BW	WW	YW	Milk	TM
	-1.3	25	50	10	22
Acc.	35	23	23	24	

LOT
104

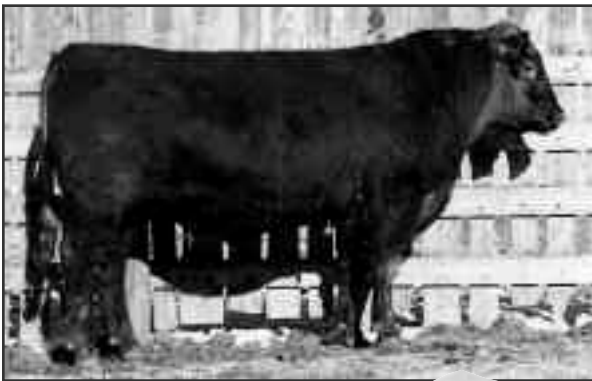
Red YY Butler 350N

Red Angus Bull

3/13/2003 YY/350N 1148119

RED THAT'LL DO DIADEM 7D	RED FCC RAMBO 502	BW	97
RED JENSEN DIADEM 78L	RED TOP LARKABA 11T	Act.	634
RED JENSEN CALIBRE 88H	RED U-2 FATE 20F	WW	1092
	RED JENSEN BOOTY 588E	Act.	1092
		YW	-
RED SSS ZAMA PINE 37S	RED PINE MEADOW 14P	ADG	-
RED YY 37S GOLDIE 840H	RED SSS DYAMA 503M	Pro	1190
RED TOP GOLDIE 40U	RED LINE FLAME 11N	Sale	1190
	RED LINE GOLDIE 40K	WT	

EPDs	BW	WW	YW	Milk	TM
	1.2	33	51	14	31
Acc.	29	20	15	14	



Red YY Bean 219M

LOT
105

Red YY Mr Beef 292M

Red Angus Bull

5/24/2002 YY/292M 1101917

RED HLH BUSTER 406 603	RED LCC HEAVEN OR BUST1000B	BW	75
RED BADLANDS MR BEEF 805	RED HLH MS ARROW 908 406	Act.	405
RED BADLANDS KEEPSAKE 632	RED BJR JR 107	WW	896
	RED IDARED KEEPSAKE 8125	Act.	896
		YW	-
RED SUNJAY ZIKA 7Y	RED TOGNO 109U	ADG	-
RED SUNJAY ZIKA 2A	RED W P COCA 60S	Pro	1500
RED MC DREAM 102A	RED ROD PATRIOT 853U	Sale	1500
	RED SUNJAY ZIKA 13W	WT	

EPDs	BW	WW	YW	Milk	TM
	-1.3	25	50	10	22
Acc.	35	23	23	24	

LOT
106

Red YY Bean 291M

Red Angus Bull

4/13/2002 YY/291M 1106160

RED GLACIER LOGAN	RED BUFFALO CREEK VC CHIEF 105	BW	80
RED TKP BODACIOUS 693	RED GLACIER REBALAS	Act.	628
RED KRN REBA'S ROBIN	RED NA RED BARON 019	WW	1042
	RED ROCK CREEK LASA 7019	Act.	1042
		YW	-
RED SUNJAY TOGNO 1A	RED MC TOGNO COCA 60X	ADG	-
RED SHODEREE DREAM 201E	RED SUNJAY LEADING LADY 16X	Pro	1924
RED MC DREAM 102A	RED LUK COPPER 122Y	Sale	1924
	RED MC CREAM 102Y	WT	

EPDs	BW	WW	YW	Milk	TM
	1.5	32	52	14	30
Acc.	36	28	28	23	



Red YY Canyon 299M

LOT
107

Red YY Canyon 299M

Red Angus Bull

7/8/2002 YY/299M 1127070

RED BUF CRK CHF 824-1658	RED BUF CRK CHIEF 092-824	BW	90
RED LCHMN GRND CANYON 1244G	BFLO CRK CARIE VC473	Act.	529
RED KRN REBA'S ROBIN	RED LMAN ROBIN HOOD 1174B	WW	-
	RED KRN REBELLA 805/314	Act.	-
		YW	-
RED GRL SIR RAMBO 9A	RED FCC RAMBO 502	ADG	-
RED SHODEREE MIDNIGHT 11E	RED WEBB'S ELSA 373T	Pro	1850
LADY DK MIDNIGHT 11X	RED MC SHAWNEE 3T	Sale	1850
	DK LADY HILITE 211S	WT	

EPDs	BW	WW	YW	Milk	TM
	2.7	34	60	21	38
Acc.	37	25	24	24	

Offering Semen on these Feature Bulls!

Contact Scott Severson for Semen Inquiries (403) 224-3756

2/13/2000 • SLC 121K • PD73083 • Red • Gelbvieh

SLC Rip 121K

HHF POLLED SUMMIT 648U	BW	105
SLC FULLER 84F ET	Adj.	850
BB MISS 61Y	WW	1310
JWR DUNSOMKE 32Z	Adj.	
SLC MISS FIRE SMOKE 78F	YW	
GKR 117C		

EPDs	CE	BW	WW	YW	Milk	TM	Gest	DCE	SC
	101	3.1	26	50	26	39	-0.7	105	NA
Acc.	15	33	26	20	15		06	12	NA



9/10/2000 • SLC 313K • PD84991 • Black • Gelbvieh

SLC Magic Man 313K

KCF BENNETT HORIZON	BW	91
XZR C342 (STUBBY)	Adj.	912
XZR 113A	WW	1372
KCF BENNETT VAILLIANT C209	Adj.	
SLC DELIA 5H	YW	
WGG FOXY DELIA 34F		

EPDs	CE	BW	WW	YW	Milk	TM	Gest	DCE	SC
	105	.8	46	82	19	42	-0.9	109	NA
Acc.	12	30	24	22	17			12	NA



2/21/2001 • SLC 118L • PD82589 • Black • Gelbvieh

SLC Latigo 118L

TLR COCOA 35C	BW	100
RTC ATLAS 712G	Adj.	824
RTC 414D	WW	1425
CKS HOCKEY 82N	Adj.	
DJD VALLEY POLLED CLOUD 60X	YW	
DJD VALLEY 38K		

EPDs	CE	BW	WW	YW	Milk	TM	Gest	DCE	SC
	103	1.1	50	86	13	38	-0.2	102	-1
Acc.	I	I+	30	27	19		I	I	I



2/26/1996 • SLC 178F • PD38968ET • Red • Gelbvieh

SLC Freedom 178F ET

GLT SENSATION'S DAY 21Y	BW	88
VAA LEACHMAN NEW DAY 205B	Adj.	599
VAA 023Z	WW	1196
BB MR FORKAS 1S (JSE M2)	Adj.	
BB MISS 61Y	YW	
BB BELL ORCHID 2U		

EPDs	CE	BW	WW	YW	Milk	TM	Gest	DCE	SC
	105	-0.7	38	81	21	40	-5.8	100	0.4
Acc.	90	96	94	87	71		94	74	88



2/19/1998 • SLC 80H • D51487 • Black • Gelbvieh

SLC Rated R 80H

KCF BENNETT PREMIER Z104	BW	94
SLC EMPIRE 41E	Adj.	877
YHR 54Y	WW	1219
LNR CAPSTONE 822Y	Adj.	
SLG MISS BERGEN SLG 109A	YW	
AFG BERGEN WILLOW		

EPDs	CE	BW	WW	YW	Milk	TM	Gest	DCE	SC
	102	2.4	39	67	23	43	-0.9	102	0.3
Acc.	25	73	61	39	15		27	15	26



1/8/1996 • YY 614F • 845578 • Red Angus Bull

Red YY 408D Top Cunn 614F

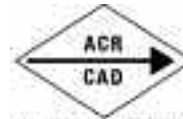
RED BJR TOPPER AGAIN 23L	BW	77
RED YY 23L TOPPER 408D	Adj.	638
RED DEVLANE ROZINE 8B	WW	1252
RED BIEBER DSIGN 1325-082	Adj.	
RED DEVLANE GOLDIE 40C	YW	
RED TOP GOLDIE 40U		

EPDs	CE	BW	WW	YW	Milk	TM	MCE
	4.2	0.5	19	40	4	23	4.5
Acc.	53%	73%	66%	65%	50%		50%



Severtson Land & Cattle

RR #2
Innisfail, Alberta
Canada T4G 1T7



ADDRESS CORRECTION PERMITTED
CORRECTION D'ADRESSE PERMISEE



01887585 Calgary T2E 0A0

RETURNS POSTAGE GUARANTEED
POUR DE RETOUR GARANTIS

